

# SV+ Startup

---

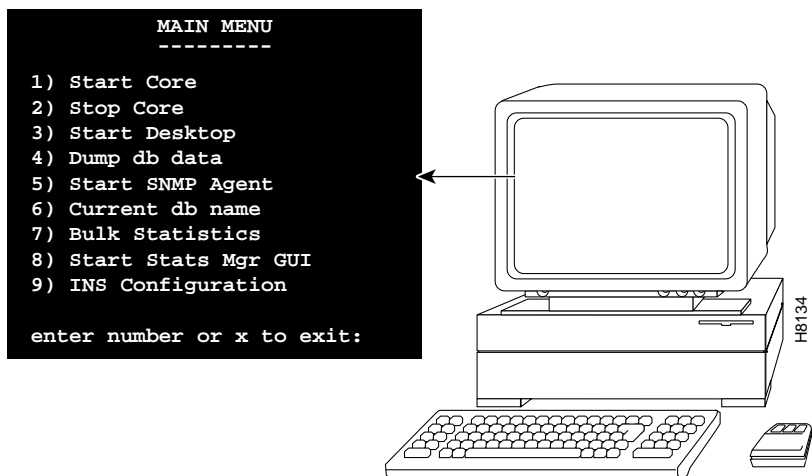
## Overview

This chapter describes two methods for accessing StrataView Plus. You can perform a full startup which presents the SV+ desktop and HP OpenView features, or you can perform a partial startup which presents only the SV+ desktop tools. You can also incorporate other functionality into your startup by using the database, statistics, or SNMP agent options of the SV+ Main Menu.

## The SV+ Main Menu

A logon at the StrataView Plus workstation results in display of the SV+ Main Menu. You use this menu primarily to initiate the SV+ core processes and, occasionally, access the SV+ desktop window. You can also use this menu to start SNMP Agents, include database details, or present the statistics GUI, and configure INS.

### Main Menu



- 1) Start Core      Use this menu option to initiate StrataView processes.
- 2) Stop Core      Use this menu option to cease StrataView processes

---

**Note** NOTE: Data collection is stopped until you restart StrataView Plus. To quit StrataView and retain data collection capability, go to the Save and Quit menus from the topology maps.

---

- 3) Start Desktop      Use this menu option to present the StrataView Plus desktop window.
- 4) Dump db data      Use this menu option to provide an additional database in your SV+ startup. After you select this menu, the system prompts for the name of the database:

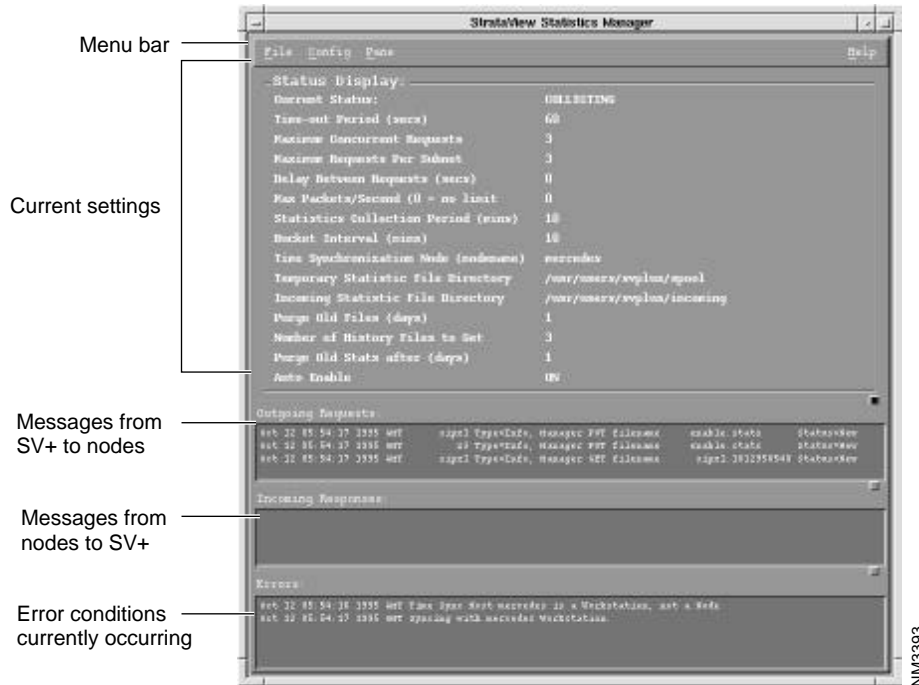
```
Current database name is StrataCom
Do you wish to use a different database (y/n)? 
```

If you do not recall the name of the database you want to load, use Database Name Search (see Chapter 10).

Once you have entered the name of the database, you can start up SV+ with the designated database by using the 1) **Start Core** command from the Main Menu.

- 5) Start SNMP Agent      Use this menu option if you are authorized to use the StrataView Plus Simple Network Management Protocol (SNMP) Proxy Agent. This agent enables read-access of the local SV+ database to remote network managers.
- 6) Current db name      Use this selection to see the name of the database currently loaded on SV+.

- 7) Bulk Statistics Select this menu option, prior to starting the StrataView Plus core, to change the StrataView Plus default statistics collection mode, from individual statistics collection to group statistics collection.
- 8) Start Stats Mgr GUI Use this menu option to present the SV+ Statistics Manager window. See Chapter 5, “StrataView Statistics Manager” for more information about the Statistics Manager window.



- 9) INS Configuration Use this menu to present the ANI Configuration Interface selection screen. Guidelines for using INS functions are provided in the *INS Dial-Up Frame Relay Operations Guide*.

## Getting to the SV+ NMS Tools

This section describes how to execute either a full or partial startup at the StrataView Plus workstation. If you want the complete toolset, do the full startup. If you want the SV+ Desktop only, do the partial startup.

### Full Startup

During a full SV+ startup process, you will need to display two C Shell windows on your workstation screen. You will present the Main Menu to start core processes at one of these windows. At the other C-shell, you will access the HP OpenView environment which leads to the StrataView Plus desktop.

- 1 Log in at the StrataView Plus workstation:

```
login:          svplus
password:      svplus
at UNIX prompt: sv+
```

The StrataView Plus Main Menu appears.

- 2 At the Main Menu, start core process:

```
at enter number or x to exit prompt: 1
```

You now see core processing messages scroll over the shell window.

- 3 Go to the second shell window and use the following commands to invoke the HP OpenView window tools:

```
at UNIX prompt: cd /usr/ov/bin
at UNIX prompt: ovw
```

The HPOpenView root window appears. From StrataView Plus, you can start the StrataView Statistics Manager, SNMP Agents, INS Configuration, the StrataView Plus Desktop.

From HPOpenView menus, you can launch the StrataView Plus Desktop, Equipment Manager, Event categories.



## Partial Startup

During a partial SV+ startup, you will present the Main Menu to start core processes, wait for completion, and use the Main Menu to start the SV+ desktop.

- 1 Log in at the StrataView Plus workstation:

login: `svplus`

password: `svplus`

at UNIX prompt: `sv+`

The StrataView Plus Main Menu appears.

- 2 At the Main Menu, start core process:

enter number or x to exit: `1`

You now see core processing messages scroll over the shell window. Wait until the main menu reappears.

- 3 At the Main Menu, start the SV+ desktop:

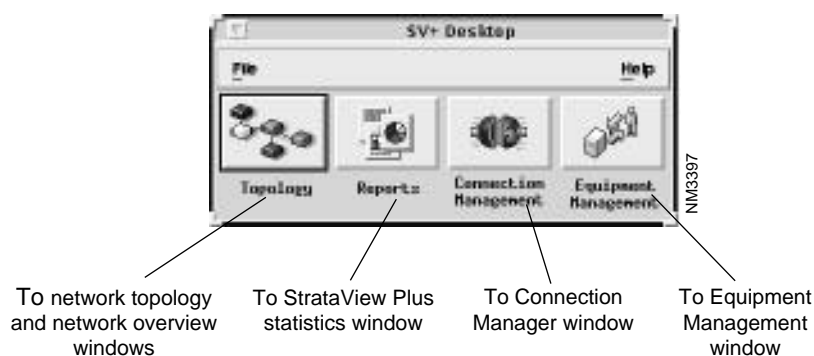
at the *enter number or x to exit* prompt: `3`

The SV+ Desktop appears.

## The SV+ Desktop Window

Presentation of the StrataView Plus Desktop dialog window provides access to the principle NMS applications. Buttons on the SV+ Desktop launch the toolsets you need for specific network management, monitoring, and administration tasks. Use the SV+ Desktop menu bar to either exit the window or access help, see Figure 2-1.

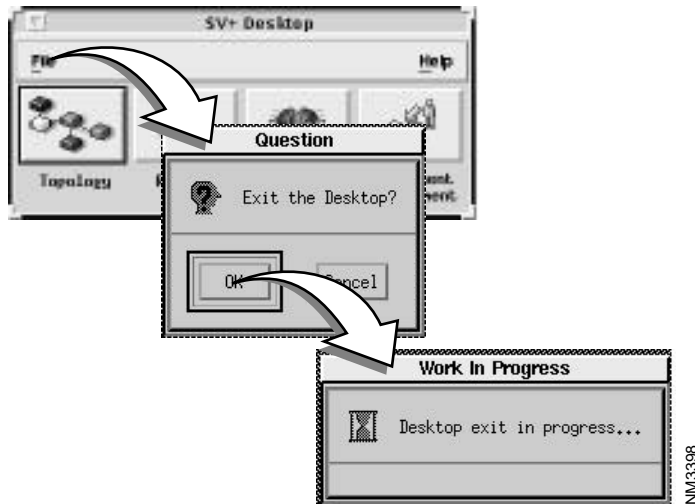
Figure 2-1 SV+ Desktop Menu Bar



### File – Exit Menu

Use this menu to terminate all desktop processes and exit the SV+ desktop window.

Invocation of File Exit presents a confirmation query from which you can either continue or abort the exit request



### File – Help – On Version Menu

Use this menu to view the version number of the StrataView Plus software currently running on your workstation



## Starting Additional GUIs

---

**Note** To run multiple StrataView GUIs, you need a multi-use WingZ license.

---

More than one workstation can run the StrataView Plus GUI. Licensed workstations operating on a common LAN log in to HPOpenView and access the SV+ desktop from the HPOpenView Menu Bar.

---

**Note** Any Main Menu may shut down StrataView Plus. Therefore, when quitting a Main Menu, do not quit StrataView Plus inadvertently.

---