

# Using Ping with CiscoRemote Plus

---

You can use the Ping application to test for the presence of other computers on the network. Ping is useful for situations when you want to find out if a particular server, such as a World Wide Web server or FTP server, is available.

You supply the Ping application with the IP address of a network server and Ping sends signals over the network to determine if the resource is active. The process of sending such network signals is called pinging.

## Starting Up Ping

Make sure you have the name or the IP address of the server or device you want to access. If you don't have this information, contact the network administrator or user whose system you want to ping.

## Starting Up Ping

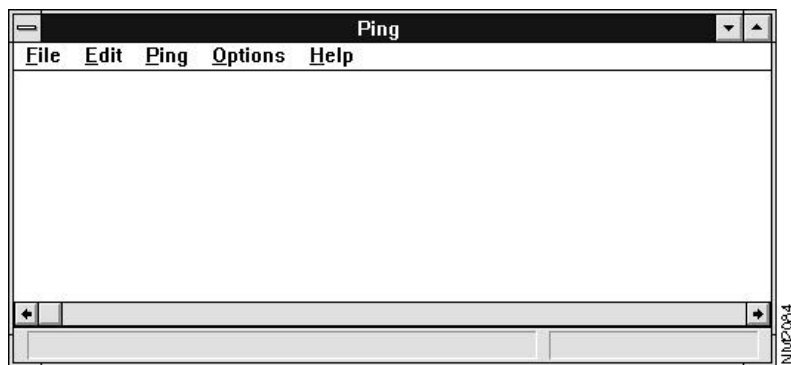
---

Take the following steps to open Ping:

**Step 1** Click on the **Ping** icon in Net Launcher.

The Ping window opens. (See Figure 14-1.)

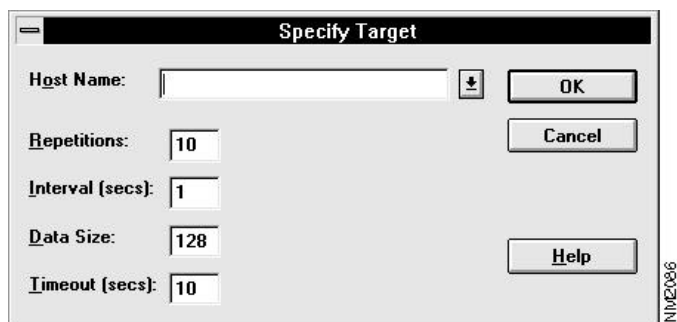
**Figure 14-1** Ping Window



**Step 2** Select **Specify Target** from the Ping menu.

The Specify Target window opens. (See Figure 14-2.)

**Figure 14-2** Specify Target Window



**Step 3** Enter the name or IP address of the server or device you want to ping in the Host Name field.

**Step 4** Click **OK**.

The ping results appear in the Ping window. To ping the server or device again, open the Ping menu and click on the name or IP address.

---

**Note** You can record a list of servers or devices you ping frequently by choosing **Ping Setup** from the Options menu. When you have recorded your list of names or IP addresses, you can select a server or device to ping by selecting it from the Ping menu.

---

## Other Features

For more information about Ping, refer to the document *CiscoRemote Plus Administrator Guide*, which is available on the CiscoRemote Plus CD. You can also use Ping to do the following:

- Save or print the results of pinging a server or device by selecting the **Save** or **Print** commands from the File menu.
- Specify the length of each ping signal and the time interval between signals using the Ping menu.
- Customize the look of the Ping window using the Options menu.
- Display a list of the paths taken from the remote server to your computer.

## Other Features

---