

Installing CiscoRemote Plus

You use the Install program to install the CiscoRemote Plus software and applications. The Install program also helps you configure your software and set up your modem. Have the information you gathered on the CiscoRemote Plus important information card or in Table 1-1 and Table 1-2 ready before you begin.

As you install the software, you can customize the installation to meet your specific needs. You can install all the CiscoRemote Plus software or selectively install only those applications you need.

Note Close all running applications on your PC before installing the CiscoRemote Plus software. Closing applications allows the Install program to correctly install the newest versions of dynamic link library files and avoid installation conflicts with older versions that might be in use by other open applications.

Installing Your Software

Take the following steps to install the CiscoRemote Plus software:

Step 1 Insert the CiscoRemote Plus CD into your CD-ROM drive.

Step 2 Select **Run** from the File menu in the Windows Program Manager. If you are running Windows 95, click on the **Start** button and then select **Run**.

The Run window appears.

Step 3 Enter the drive and **setup** command:

D:setup

Installing Your Software

Substitute the letter designation for your disk drive, usually D: or E:, to indicate the CD-ROM disk drive that holds the installation disk.

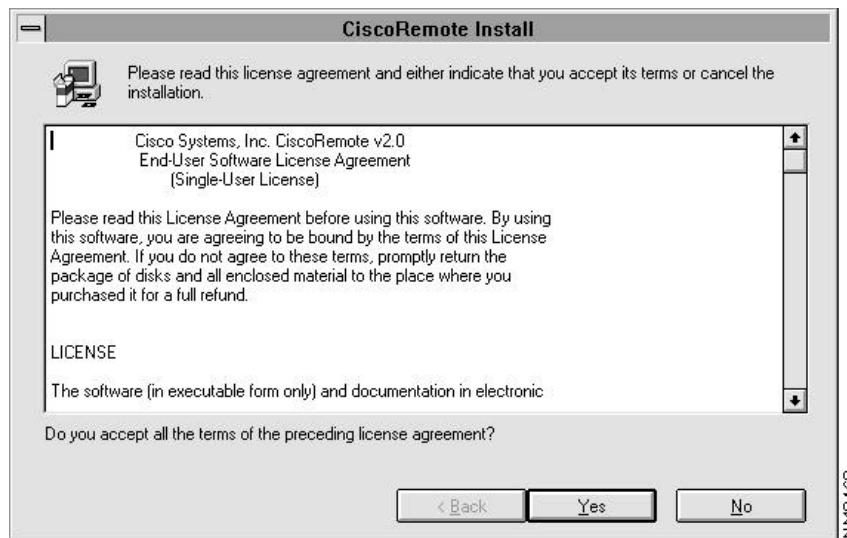
Step 4 Click **OK** to start the installation.

A window opens reminding you that no other applications should be open during the installation.

Step 5 Click on **Yes** to continue with the installation.

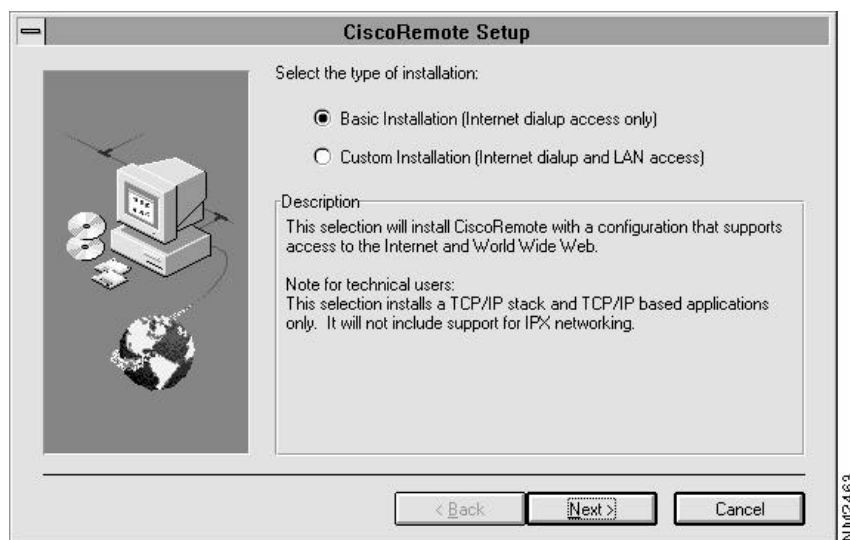
Next, the CiscoRemote Plus license agreement opens. (See Figure 2-1.)

Figure 2-1 CiscoRemote Install–CiscoRemote Plus License Agreement



Step 6 Read the agreement and click on **Yes**.

Another window opens that allows you to select the type of installation you want. (See Figure 2-2.)

Figure 2-2 CiscoRemote Setup Window

You can do a basic installation, which installs the software you need to connect to a remote Internet service, or you can do a custom installation, which installs the Internet remote access software and software for working with your company's LAN.

- To perform a basic installation to install the remote access software for the Internet only, follow the instructions in the next section "Basic Installation."
- To perform a custom installation to install the remote access software and support software for your company's LAN, follow the steps in the section "Custom Installation" later in this chapter.

Basic Installation

Take the following steps to install the software for remote access to an Internet service only:

Step 1 With the CiscoRemote Setup window open, click on **Basic Installation** and click **Next**.

The Select Directory window opens.

Step 2 Enter a directory name or accept the currently displayed directory name and click **OK**.

A window opens identifying the initialization files that the Install program will modify. The list of files might vary depending on the applications you install. Record these filenames in the event that you want to manually change these files later and restore your computer to its previous setup.

Step 3 Click on **Next**.

The Install program begins installing your CiscoRemote Plus software.

When the installation is complete, the Install program guides you through setting up your modem. Follow the steps in the section “Setting Up Your Modem” later in this chapter.

Custom Installation

Take the following steps to install a selection of the remote access software for the Internet or support software for your company’s LAN:

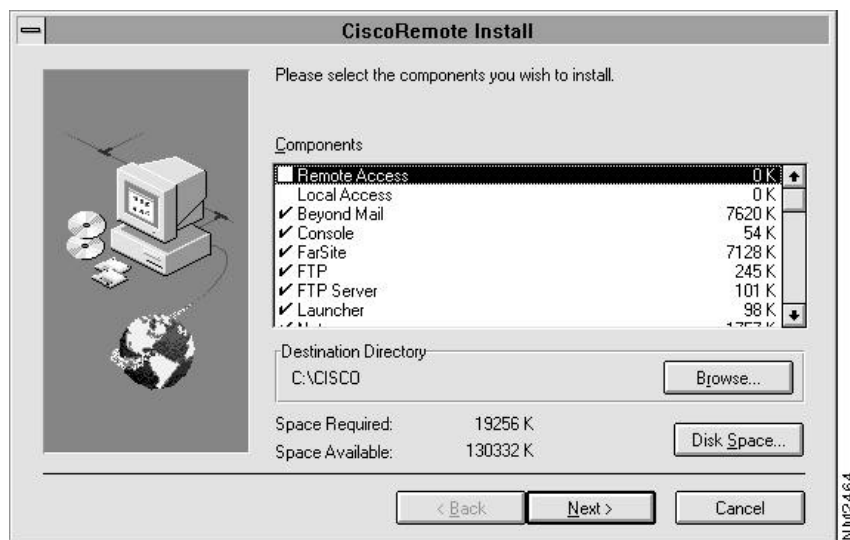
Step 1 With the CiscoRemote Setup window open, click on **Custom Installation** and click on **Next**.

Depending on your network software, you will see either of two windows open. Follow one of the steps below appropriate for the window you see:

- If an alert box opens reminding you that the network operating system software must be installed on your computer before installing the LAN support software, click on **Yes** to continue.
- If a window opens asking whether you want to enable remote access for the NetWare LAN, which turns off local access to the network, click on **Yes** and then click on **Next**.

A window opens in which you can select the software components you want to install. (See Figure 2-3.)

Figure 2-3 CiscoRemote Install Window



Step 2 Select the components you want to install by clicking on them.

Note It is a good idea to install all the applications. The Install program does not permit you to selectively install applications later without uninstalling all the CiscoRemote Plus software and then reinstalling the applications you want.

Setting Up Your Modem

A checkmark should appear beside each component you want. Select **Remote Access** to install the software for accessing the Internet remotely. Select **Local Access** if you want to install the support software for use with your company's network. You can install both the remote access and local access software, if necessary.

Step 3 Click on **Next**.

A window opens identifying the initialization files that the Install program will modify. The list of files might vary depending on the applications you install. Record these filenames in the event that you want to manually change them later and restore your computer to its previous setup.

Step 4 Click on **Next**.

The Install program begins installing your CiscoRemote Plus software.

If you have installed the remote access software, the install program next guides you through setting up your modem. Follow the steps in the next section, "Setting Up Your Modem."

If you haven't installed the remote access software, the install program next guides you through setting up the software for your LAN. Follow the instructions on the screen. If you need additional help, see the appendix "Using the Configurator."

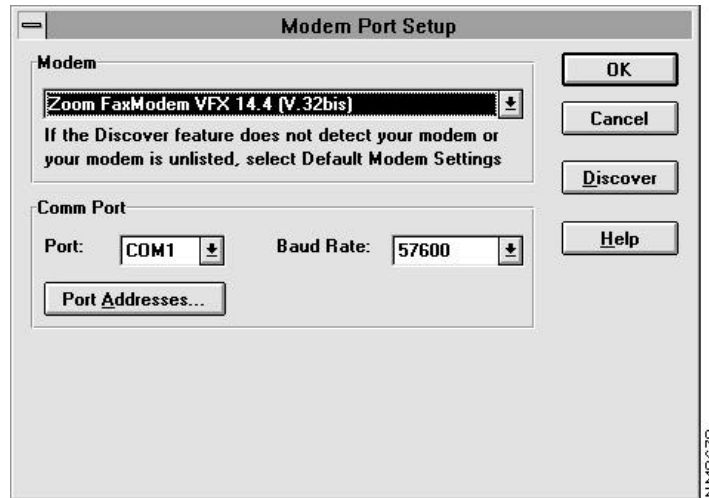
Setting Up Your Modem

To configure your modem, you must indicate the communication (COM) port to which your modem is connected, your port speed, and your modem type. Refer to the information you recorded in Table 1-2.

The Modem Port Setup window now opens on your screen. (See Figure 2-4.)

Note If you need to change your modem settings later, you can use the Net Launcher or Connect applications to change them. To change the modem options with Net Launcher, click on the **Planet** icon and then click on the **Modem** button. To change the modem options with Connect, select the **Modem Port Setup** command from the Options menu.

Figure 2-4 Modem Port Setup Window



Step 1 Click on **Discover** to have the Install program automatically set up your modem.

The Install program checks your computer and modem. If the check is successful, the modem name, COM port number, and port baud rate will appear in the window. Proceed to Step 5 if the information is correct. If the information is not correct, continue to Step 2 to manually specify the modem information.

Step 2 Select the modem type from the Modem option or select **Default Modem Settings** to accept generic modem settings.



Caution In some cases, the default modem settings may not work for your type of modem. In this case, contact your network administrator or Internet service provider for assistance.

Step 3 Select the COM port to which your modem is connected from the Port options.

Setting Up the Software with Your Network and Dialing Information

Step 4 Select a baud rate for your port from the Baud Rate option, if necessary.

Note You set the speed of your port in this option, not the speed of your modem. The port baud rate is different from the speed of your modem. Set the port baud rate to at least twice your modem's maximum speed. For example, for a 14400-baud modem, select a port speed of at least 38400 baud.

Later you can change the port speed to faster speeds (using the Net Launcher application), if needed. If you set the port speed too high, the modem will not initialize. If you set the port speed too low, network communications will be slower than your modem is capable of handling.

Step 5 Click **OK** to continue.

Your modem is now configured.

Setting Up the Software with Your Network and Dialing Information

If you're installing the remote access software, the Install program next opens the Remote Dialup Settings window. (See Figure 2-5.) You'll use the information that you recorded in Table 1-2, "Local Modem or ISDN Adapter Information" to complete the installation procedure.

Figure 2-5 Remote Dialup Settings Window

Remote Dialup Settings

Setup needs the following information to enable you to connect to your dialup service provider:

Your local area code:

Any prefix needed before dialing an area code (ex: 1):

Any other prefix needed (ex: *70 to disable call waiting):

Your dialup service provider's phone number (ex: 408-555-1212):

Your login name (assigned by your dialup service provider):

Your password (assigned by your dialup service provider):

< Back Next > Cancel

NMP2686

- Step 1** Enter your area code in the Your local area code field.
- Step 2** Enter the dialing prefix used before dialing an area code in the Any prefix field.
- Step 3** Enter any other numbers you normally dial, such as *70 to turn off call waiting, in the Any other prefix field.
- Step 4** Enter the telephone number you must dial to access your network or Internet service in the Your dialup service provider's phone number field.
- Step 5** Enter you username or login name in the Your login name field.
For example, enter `JaneDoe@cisco.com`
- Step 6** Enter your password in the Your password field.
- Step 7** Click on **Next**.

A window appears asking you to enter your password to confirm the spelling.

Setting Up the Software with Your Network and Dialing Information

Step 8 Enter your password again and click **OK**.

The Reboot window opens.

Note If you are installing the software to support your company's LAN, additional windows open in which you must supply network information. Follow the instructions on the screen. If you need additional help, see the appendix "Using the Configurator."

Step 9 Click on **Yes** to restart Windows.

After restarting Windows, you use the CiscoRemote Plus Net Launcher application to establish a connection with your network or Internet service. You'll find the Net Launcher has been configured to connect to your network or Internet service. For more information about connecting to your company network or the Internet, see the next chapter, "Setting Up a Connection Using CiscoRemote Plus."