

Installation Procedures

This chapter provides the following sections:

- System Requirements
- Supported Cisco IOS Versions and Devices
- Installing CastleRock SNMPc
- Installing CiscoWorks Windows
- Starting CiscoWorks Windows

Note For CiscoWorks Windows release-specific information, open the *readme.wri* file by double-clicking on the Readme File icon in your CiscoWorks Windows program group.

System Requirements

This section describes CiscoWorks Windows software and hardware requirements.

Software

You must install the following software in order to run CiscoWorks Windows:

- Microsoft (MS) Windows 95 or Windows NT 3.51, TCP/IP enabled.

CiscoWorks Windows requires that the native WINSOCK stacks supplied with these operating systems be configured.

You can install CiscoWorks Windows in one of three ways:

Supported Cisco IOS Versions and Devices

- As a stand-alone application.
- On Hewlett-Packard OpenView (HP OpenView) for Windows 7.2b (Version C.02.14 or 2.14).
- On CastleRock SNMPc Version 4.1g or with HP OpenView emulation support. If you use this option, see the separate SNMPc CD-ROM and the appropriate section in the CD-ROM booklet for instructions.

Hardware

The minimum hardware requirements for running CiscoWorks Windows include the following:

- IBM PC-compatible 486 (586 Pentium with 50 MHz clock recommended)
- SVGA color monitor and graphics adapter
- 16-24 megabytes (MB) of random access memory (RAM), 32 MB recommended
- A serial port and/or a network interface card (NDIS/ODI-compliant recommended)
- 35-70 MB available hard drive space
- Windows-compatible CD-ROM drive
- Mouse or mouse-compatible pointing device

Supported Cisco IOS Versions and Devices

CiscoWorks Windows applications are supported for the specific Cisco IOS versions and Cisco devices described in the following two sections. To determine if your device is supported, refer to both sections.

Cisco IOS Versions

CiscoWorks Windows applications are supported for Cisco IOS versions as follows:

- Configuration Builder

For all Configuration Builder features other than access server options, Cisco devices must be running Cisco IOS Versions 10.0 through 11.0(3). For access server features, Cisco devices must be running Cisco IOS Versions 10.2 through 10.3(3).

- Health Monitor, Show Commands, and CiscoView

Cisco devices must be running Cisco IOS Versions 10.0 through 11.1. CiscoView devices may require specific Cisco IOS versions. Refer to the CiscoWorks Windows Release Note for details on device and Cisco IOS version information.

Cisco Devices

CiscoWorks Windows applications support different devices and software releases. Refer to the release notes (online or in the Customer Connection Online service) for the latest information on devices supported.

Installing CastleRock SNMPc

CastleRock SNMPc software must be loaded on your PC before you can install CiscoWorks Windows. Complete the following to install CastleRock SNMPc:

Step 1 Insert the CastleRock SNMPc CD-ROM into your CD-ROM drive.

Step 2 In the MS Windows NT Program Manager window, select **File>Run**. If you are using Windows 95, select **Start>Run**.

Step 3 Enter the letter that indicates the CD-ROM drive followed by a colon, a backslash, and **setup**. For example:

d:\setup

The Welcome dialog box appears.

Step 4 Click on **Continue**.

The Registration dialog box appears.

Installing CastleRock SNMPc

Step 5 Enter your name, company, and serial number. Your serial number is located in the following three places:

- On the front cover of the CastleRock SNMPc Reference Guide
- Inside the CD-ROM case
- On your registration card

Step 6 Click on **Continue**.

The Registration Confirmation dialog box appears.

Step 7 Click on **Yes**.

The Type of Installation dialog box appears.

Step 8 Click on one of the following CastleRock SNMPc installation options:

- SNMPc Installation (installs the SNMPc network management platform for Windows NT and Windows 95)
- Vendor Installation (installs vendor-specific applications for managing third-party devices)

The Installation Location dialog box appears.

Step 9 Keep the default or enter the directory in which you want to install SNMPc; then click **OK**.

Note If HP OpenView is installed on your system, the program asks whether you want to install SNMPc as a subapplication of HP OpenView. Click **No** to install SNMPc separately from HP OpenView.

Step 10 The Release Notes dialog box appears, asking whether you want to review the release notes. Click **Yes** to view the notes. Click **No** to bypass the notes.

Step 11 Click **Exit Installation**.

The SNMPc installation is complete, and the SNMPc program group appears in your Program Manager window.

Installing CiscoWorks Windows

The CiscoWorks Windows installation performs the following procedures automatically:

- Detects existing CiscoWorks Windows or CiscoVision installations
- Deinstalls CiscoWorks for Windows 1.0 or CiscoVision installations
- Incrementally installs all required files

Before installing CiscoWorks Windows, you need to back up your data files generated by Configuration Builder, as described in the section “Upgrading from a Previous Version of Configuration Builder.” Then install CiscoWorks Windows as described in the section “Installing Applications.”

Upgrading from a Previous Version of Configuration Builder

If you are upgrading from Configuration Builder 1.1 or 2.0, back up all Configuration Builder data files before beginning the installation procedure. Remove the existing *ciscocb.ini* file from your PC before you install CiscoWorks Windows. For a list of data file types, see the section “Configuration Builder Files” in the “CiscoWorks Windows Features” chapter.

Installing Applications

If you are installing CiscoWorks Windows on the HP OpenView or SNMPc platforms, ensure that both your platform software and a WINSOCK-compliant TCP/IP stack are already installed on your hard drive before completing the steps in this section.

To install CiscoWorks Windows applications, complete the following steps:

- Step 1** Insert the CiscoWorks Windows CD-ROM into your CD-ROM drive.
- Step 2** If you are using Windows NT, select **File>Run** in the MS Windows NT Program Manager window.

If you are using Windows 95, select **Start>Run**, or select **Start>Control Panel>Add/Remove Programs** and click **Install**.

Installing CiscoWorks Windows

Step 3 Enter the letter that indicates the CD-ROM drive followed by a colon, a backslash, and **setup**. For example:

d:\setup

The Welcome dialog box appears. Click **Next**.

Step 4 The User Information dialog box appears. Enter your name and company; then click **Next**.

Step 5 The Select Installation Option dialog box appears. Click on one of the following CiscoWorks Windows installation options; then click **Next**:

- CastleRock SNMPc
- HP OpenView
- Standalone

If you choose CastleRock SNMPc or HP OpenView, you must have that network management platform installed; otherwise, this program exits. You can re-run the CiscoWorks Windows installation program after installing the appropriate network management platform (CastleRock SNMPc or HP OpenView). If you choose standalone, only the CiscoView application will be operational.

Step 6 The Choose Destination Location dialog box appears. Keep the default or enter the directory in which you want to install CiscoWorks Windows. A browse button is provided for finding the directory. After choosing the destination directory, click **Next**.

Note If either CiscoWorks Windows or CiscoVision exists on your system, you can choose to install the new version in the same directory. This automatically uninstalls the previous version. If you choose to install CiscoWorks Windows in a different directory, the previous version is not uninstalled and might not function properly.

Note If the Kalpana SwitchVision application is installed on your system, you are prompted where to install CiscoWorks Windows. If you install CiscoWorks Windows in the *swvision* directory, SwitchVision will not function. You can install CiscoWorks Windows in a different directory to maintain SwitchVision functionality.

Step 7 The Device Installation dialog box appears. You can select one of the following options:

- Select the individual devices you want to install; then click **OK**.
- Select **Select All** (devices); then click **OK**.
- Select **Cancel** to install devices later.

Step 8 The Start Copying Files dialog box appears. To begin the file install, click **Next**.

The Copying Files display appears, showing you the percentage of the program successfully installed.

Note If the message “Not Enough Disk Space” displays, the setup program terminates. You need to free up disk space. A minimum of 70 MB is required to install CiscoWorks Windows.

Step 9 The Setup Complete dialog box appears. The options in this dialog box depend on your installation type:

- Standalone: you can either view the ReadMe file or run CiscoView.
- HP OpenView: if this is the first time CiscoWorks Windows was installed on your system, you can either restart your computer now or restart it later.
- CastleRock SNMPc: you can view the ReadMe file.

Select your option; then click **Finish**. The CiscoWorks Windows installation is complete.

Step 10 To use CiscoWorks Windows, click on **Restart** to restart your computer.

Installing CiscoWorks Windows

Note You must restart your system before using CiscoWorks Windows applications. CiscoWorks Windows will not run properly until the system has been restarted.

You now have a CiscoWorks Windows program group in your Program Manager window.

Note HP OpenView uses a significant amount of conventional memory. If you have trouble starting CiscoWorks Windows under HP OpenView, see the “HP OpenView Memory Issues” section in the “Troubleshooting Procedures” chapter.

Loading MIBs

The CiscoView and Health Monitor applications use a set of MIB files to query devices for information. For more information, see the *CiscoWorks Windows Installation Instructions*.

This section describes how MIB files are loaded during installation.

HP OpenView MIBs

If you are using HP OpenView, you need to run the *ovmibs.bat* file to load MIBs into the HP OpenView SNMP MIB database. The *ovmibs.bat* batch file resides in the directory in which HP OpenView was installed, such as *c:\ov\mibs*.

SNMPc MIBs

If you are using CastleRock SNMPc, MIBs are put in the *mibfiles* directory during installation.

Note You must perform the following steps to recompile the MIB database; otherwise, CiscoWorks Windows will not work.

To recompile the MIB database after installing CiscoWorks Windows, perform the following procedure:

- Step 1** Double-click on the CiscoWorks Windows icon. An SNMPc dialog box appears prompting you to recompile the MIB database.
- Step 2** Click **Yes** to recompile the MIB database.
- Step 3** After compilation, the SNMPc Compile OK message appears. Click **OK**.

Note See your platform documentation for details on using SNMP Manager to define and select SNMP queries.

Reinstalling and Deinstalling Applications

If you choose to reinstall CiscoWorks Windows, the program updates older versions of existing CiscoWorks Windows files. If you choose to deinstall the application, all files associated with CiscoWorks Windows are deleted, and the CiscoWorks Windows program group is removed from the Program Manager window.



Caution When you select the deinstall option, the program removes the entire *\data* subdirectory from the directory where you installed Configuration Builder 2.1. Make sure to back up your *\data* subdirectory files to a new location before you deinstall CiscoWorks Windows.

To reinstall CiscoWorks Windows, complete these steps:

- Step 1** Insert the CiscoWorks Windows CD-ROM into your CD-ROM drive.
- Step 2** In the MS Windows NT Program Manager window, select **File>Run**. In Win95, select **Start>Run**. Enter the letter assigned to your CD-ROM drive, followed by a colon, backslash, and the **setup** command. For example:

d:\setup

You are prompted to reinstall CiscoWorks Windows.

Installing CiscoWorks Windows

Step 3 Select the preferred option.

To deinstall CiscoWorks Windows:

Step 1 On Windows NT, double click on the Uninstall CiscoWorks icon. On Win95, select **Start>Programs>CiscoWorks Windows>Uninstall CiscoWorks**.

Step 2 Click **Yes** on “Uninstall CiscoWorks Windows”.

Step 3 Click **OK** on “Finsh Uninstalling CiscoWorks Windows”.

Installing Devices

To install devices after CiscoWorks Windows is installed on your system, follow these steps:

Step 1 Double-click the Device Installation icon. The Select Package dialog box appears.

Step 2 Select as many device package files as you want; then click OK. The Setup complete dialog box appears. See Step 9 under “Installing Applications” for information about this dialog box.

Starting CiscoWorks Windows

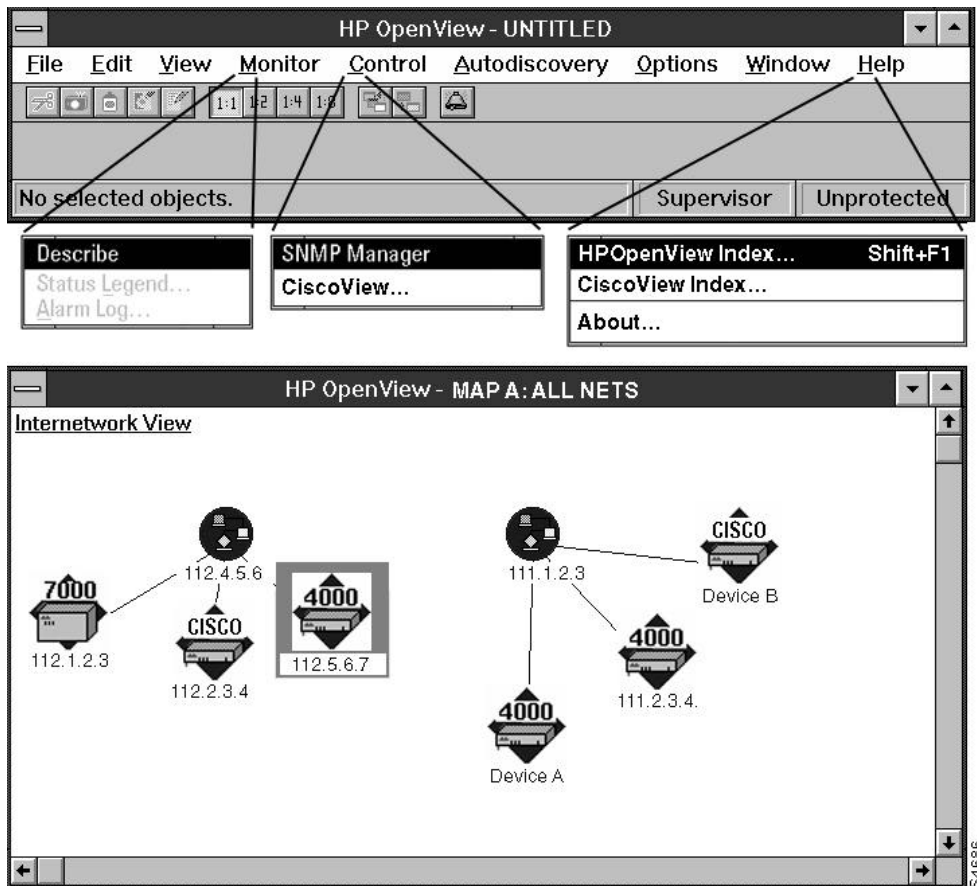
Depending on your type of installation, the Program Manager window contains the following icons:

- If you installed CiscoWorks Windows as a standalone application, six icons appear in your program window: Configuration Builder, CiscoView, Readme File, Install Device, Uninstall Device, and Uninstall CiscoWorks.
- If you installed CiscoWorks Windows on HP OpenView, six icons appear in your program window: Configuration Builder, CiscoWorks Windows (which starts HP OpenView), Readme File, Install Device, Uninstall Device, and Uninstall CiscoWorks.
- If you installed CiscoWorks Windows on CastleRock SNMPc, six icons appear in your program window: Configuration Builder, CiscoWorks Windows (which starts CastleRock SNMPc), Readme File, Install Device, Uninstall Device, and Uninstall CiscoWorks.

Click on **ReadMe** to learn about CiscoWorks Windows software release information.

Starting CiscoWorks Windows

Figure 1-1 CiscoWorks Windows Menu Items in HP OpenView



In order to run CiscoWorks Windows applications, complete the following tasks:

- Step 1** Double-click on the CiscoWorks Windows icon in the CiscoWorks Windows Program Manager group.

Step 2 Rediscover all network maps so as to properly display Cisco devices.

- If you are using HP OpenView, use the HP OpenView Autodiscovery menu options to discover your network and create a network map. See your HP OpenView for Windows user guide for details on using the HP OpenView Autodiscovery feature.
- If you are using CastleRock SNMPc, use the SNMPc Autodiscovery menu options to discover your network and create a network map. See your CastleRock *SNMPc Network Management Reference Guide* for details on using the CastleRock Autodiscovery feature.

Step 3 To start a CiscoWorks Windows application, do one of the following:

- Double-click on the CiscoView icon to start CiscoView.
- Double-click on a Cisco device within the network map to start CiscoView.

Note HP OpenView uses a significant amount of memory. If you have trouble starting CiscoWorks Windows under HP OpenView, see the section, “HP OpenView Memory Issues” in the “Troubleshooting Procedures” chapter.

Adding New Cisco Devices and Applets

New device support will be added to CiscoView incrementally in an ongoing effort to meet your network management needs.

To add incremental device and applet support to CiscoView, access Cisco Connection Online (CCO). CCO, formerly Cisco Information Online (CIO), is the Cisco Systems online support channel.

Instructions on how to download additional devices for CiscoView are in the Software Image Library’s Enterprise Network Management section on CCO or on the anonymous ftp server. For specific instructions on accessing CCO, refer to the quick reference card attached to the CiscoWorks Windows registration card.

