

Starting and Navigating in AtmDirector

After AtmDirector is installed on your system, you can start and shut down the application by entering the correct commands from the UNIX command line. Command options allow you to perform special functions, such as running AtmDirector in debug mode or checking the version of AtmDirector. Refer to Appendix A, “Troubleshooting,” for information about using these and other command options.

The AtmDirector application displays a window that provides useful information about your network and options for accomplishing most of the tasks you want to perform.

There are additional utilities that you can execute from the UNIX command line to back up, recover, and enlarge the database. Refer to Appendix B, “AtmDirector Database Management.”

Starting the AtmDirector Application

To start the AtmDirector application, follow these steps:

- Step 1** Log in to your system.
- Step 2** Bring up your window manager.
- Step 3** Open an xterm window.
- Step 4** Change directory by entering the following command:

```
% cd /opt/CSCOatmd/bin
```

Windows, Options, and Menus

Note If you installed AtmDirector in a directory other than *CSCOatmd*, enter that directory name. If the AtmDirector bin directory is in your search path, you can enter the command to start AtmDirector from any directory.

Step 5 Enter the following command to start AtmDirector:

```
% atmdirector
```

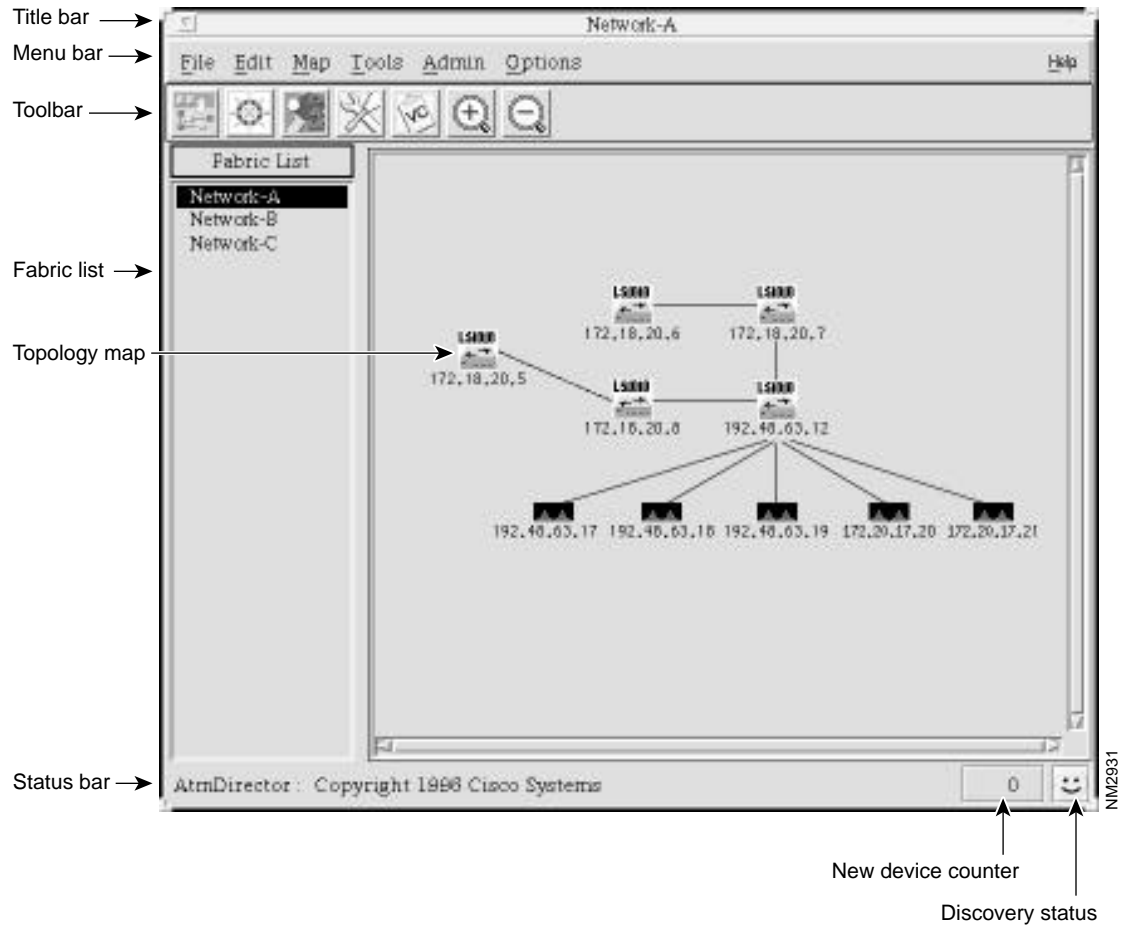
The system displays the AtmDirector main window.

Windows, Options, and Menus

When you start AtmDirector, the AtmDirector window appears, as shown in Figure 2-1. The window contains the following elements:

- Title bar—Displays the name of the selected network fabric map.
- Menu bar—Provides access to all AtmDirector functionality. Table 2-1 through Table 2-6 list and explain the options under each menu.
- Toolbar—Provides quick-access buttons for accessing the Update, Navigator, OAM Ping, SPVP Setup, VC List, Zoom In, and Zoom Out options.
- Fabric list—Contains a list of ATM network fabric maps.
- Topology map—Shows the topology map for the selected network fabric map.
- Status bar—Displayed at the bottom of the window. Provides the application name, a New Device Counter box showing the number of new devices discovered since the map was last updated, and a Status icon showing the status of the discovery process. The status icon is yellow with a happy face when discovery is running and blue with a sad face when discovery is not running.

Figure 2-1 AtmDirector Window



Windows, Options, and Menus

Table 2-1 **File Menu Options**

Option	Description
Print	Brings up a window where you can select whether to print the entire map or only the part of the map that is visible. You can print the map to a printer or to a file.
Close	Closes the current topology map window.
Exit	Closes all windows and exits the application.

Table 2-2 **Edit Menu Options**

Option	Description
Delete	Lets you delete a device or a link.
Rename Fabric	Displays a window for changing the name of a network fabric.
Update	Adds new devices to the topology map. New devices are those that have been discovered since the map was opened or updated.

Table 2-3 Map Menu Options

Option	Description												
Navigator	Opens a navigation window for viewing a specific area of the network topology map.												
Zoom In	Increases the size of the objects in the topology map and narrows the view area.												
Zoom Out	Decreases the size of the objects in the topology map and widens the view area.												
Object	Displays a cascaded menu that provides options for managing objects.												
	<table><tr><th>Option</th><th>Description</th></tr><tr><td>Describe</td><td>Shows detailed information about the selected device or link.</td></tr><tr><td>CiscoView</td><td>Invokes CiscoView for the selected device.</td></tr><tr><td>Hide endhosts</td><td>Conceals the end hosts and links connected to the selected switch from view on the topology map.</td></tr><tr><td>Show endhosts</td><td>Reveals all of the end hosts and links connected to the selected switch on the topology map.</td></tr><tr><td>Manage/Unmanage</td><td>Tells AtmDirector to poll the device for status information. Unmanage tells AtmDirector not to poll the device for status information.</td></tr></table>	Option	Description	Describe	Shows detailed information about the selected device or link.	CiscoView	Invokes CiscoView for the selected device.	Hide endhosts	Conceals the end hosts and links connected to the selected switch from view on the topology map.	Show endhosts	Reveals all of the end hosts and links connected to the selected switch on the topology map.	Manage/Unmanage	Tells AtmDirector to poll the device for status information. Unmanage tells AtmDirector not to poll the device for status information.
Option	Description												
Describe	Shows detailed information about the selected device or link.												
CiscoView	Invokes CiscoView for the selected device.												
Hide endhosts	Conceals the end hosts and links connected to the selected switch from view on the topology map.												
Show endhosts	Reveals all of the end hosts and links connected to the selected switch on the topology map.												
Manage/Unmanage	Tells AtmDirector to poll the device for status information. Unmanage tells AtmDirector not to poll the device for status information.												
Refresh	Redraws the AtmDirector windows.												
Relayout	Redraws the topology layout in a default layout.												
New Devices	Displays a list of devices discovered since the last update. After the topology map is updated, this list is cleared.												

Windows, Options, and Menus

Table 2-4 Tools Menu Options

Options	Description
OAM Ping	Initiates an OAM ping to a selected device and link.
Soft PVC/PVP Setup	Displays a window that lets you set up a SPVC or SPVP between end hosts.
VC List	Displays a cascaded menu for choosing the VCs to list. You can select all connection or connections by SVC addresses.

Table 2-5 Admin Menu Options

Option	Description
Clear State	Resets the previously down status of the selected device.
Clear State All	Resets the previously down status of all devices in the fabric.

Table 2-6 Options Menu Options

Option	Description
Global Options	Opens the Global Options window, where you can configure discovery SNMP polling parameters (polling interval, timeout, and retries) and miscellaneous parameters (default network fabric and zoom factor). You can also turn on and off topology and discovery debug options for logging messages.