

Getting Started With CiscoWorks Blue SNA View

CiscoWorks Blue SNA View extends the functionality of the following applications by adding features to their View menus.

- CiscoWorks Blue Maps / RSRB Map application

The added features are:

- **View> PU**—Displays information about a specified PU and its path through the network.
- **View> LU**—Displays information about a specified LU and its path through the network.
- The ability to point to a real ring (oval) and request information about the PUs and LUs associated with that ring, and to manage those LUs and PUs.
- **Admin> SNA View Task Manager**—a window for specifying the mainframe domain(s) from which to collect management information, and other administrative duties

Quick Tutorial on SNA View

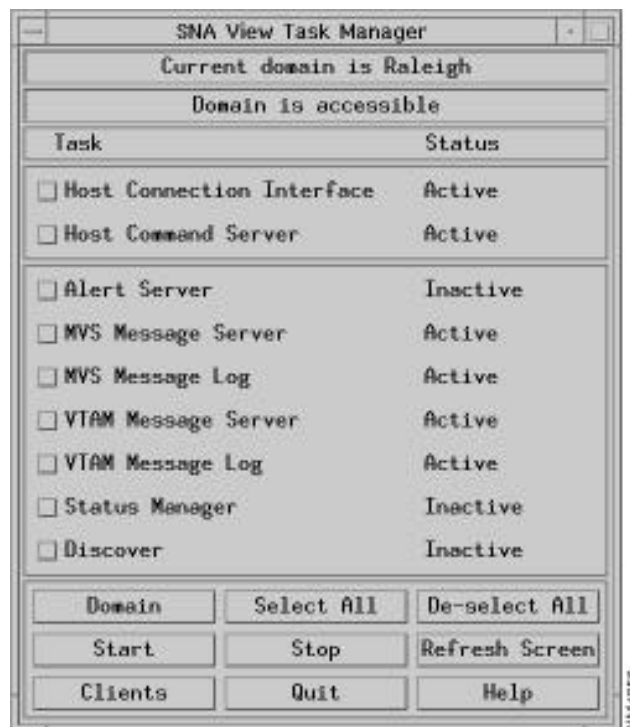
The following is a novice's introduction to CiscoWorks Blue SNA View, but it assumes a thorough understanding of an underlying CiscoWorks Blue Map application.

- Step 1** Start the RSRB Map application. Open a custom topology file or create a map showing the devices of interest in an appropriate view. Refer to the *CiscoWorks Blue Maps Installation Guide*, if necessary.
- Step 2** Select **Admin> SNA View Task Manager**. The SNA View Task Manager window appears.

Quick Tutorial on SNA View

- Step 3** Connect to a domain. First, click the **Domain** button. Then, in the Available Domains window, highlight a domain name and click the **Connect** button. The SNA View Task Manager reappears as in Figure 4-1.

Figure 4-1 SNA View Task Manager Window With a Domain Selected



- Step 4** If the Host Command Server and Host Connection Interface processes are not Active, start them by clicking on both processes and clicking on the **Start** button.

Step 5 If this is the first time you are using SNA View with this domain, or if you suspect that not all of the PUs have been discovered, the database of SNA data must be constructed or re-constructed. Click **Discover**, then click the **Start** button. The Discover process retrieves information about the PUs and LUs in the selected SNA domain. This may take some time to complete.

Otherwise, click **Status Manager** and click the **Start** button.

Note Other utilities in the SNA View Task Manager are optional (not required for basic operation of the PU View and LU View features of the RSRB Map application).

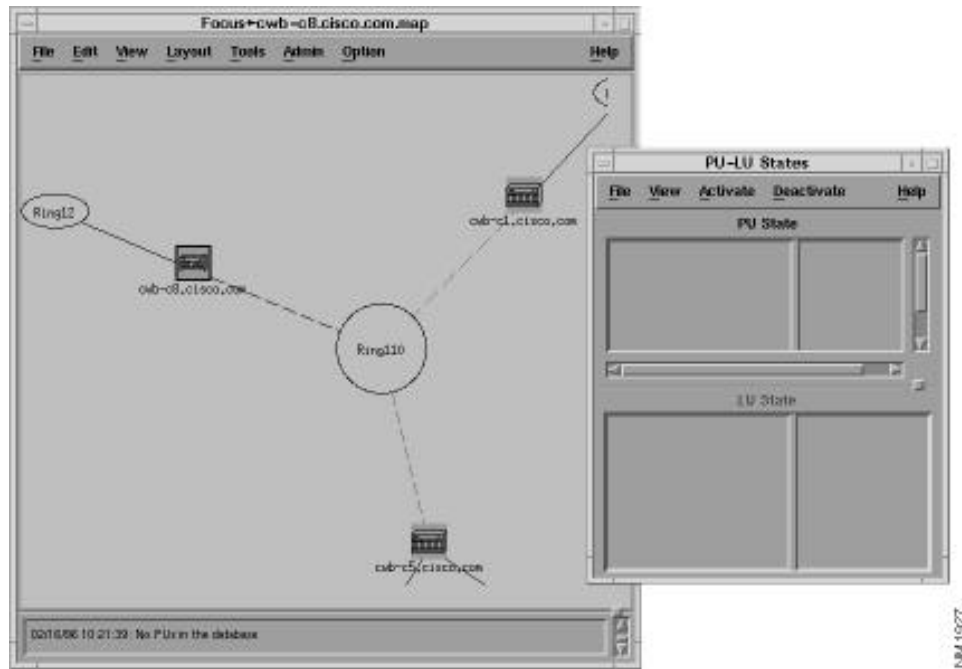
Step 6 On the RSRB main window, you can:

- Display information about specified LUs and PUs and their paths through the network. To start, select **View> LU** or **View> PU**, type the name of the target resource at the Pu/Lu Prompt in the format *name.sna_domain*, and then click the **OK** button. Remember the resource name is case-sensitive. The application highlights the router that handles that resource.
- Point to a real ring (oval) on the map (such as the one adjacent to the PU or LU you just searched for, or one you found by visual search), click the right mouse button, and select **PU-LU Info** on the view selection popup. See “All About the PU-LU Info Window.”

All About the PU-LU Info Window

The PU-LU Info window is a control panel for Physical Units and Logical Units that are located on the specified physical ring.

Figure 4-2 PU-LU Info Window in the RSRB Maps Application



To access the PU-LU Info window:

- Step 1** Point to a real ring (oval) on the RSRB Map
- Step 2** Press the right mouse button
- Step 3** Select PU-LU Info on the popup menu.

The PU-LU Info window lists the PU or PUs that are handled by the real ring you pointed to. When you select **View>Show LU**, the LU list in the lower part of the PU-LU Info window contains the LUs that are dependant on the PU that is highlighted in the upper part.

After you highlight a PU or LU of interest, you can:

- **Activate it**—This is comparable to the VARY ACT command of VTAM. Select one of the following:
 - **Activate> Default.** Activates resources like the VARY ACT SCOPE=COMP command of VTAM.
 - **Activate> All.** Activates the resource and subordinate resources regardless of their ISTATUS values.
 - **Activate> Only.** Activates the selected resource but no subordinates (regardless of their ISTATUS values)
- **Deactivate it**—This is comparable to the VARY INACT command of VTAM. Select one of the following:
 - **Deactivate> Quiesce.** Deactivates the resource and subordinate resources when all current sessions are complete.
 - **Deactivate> Immediate.** Deactivates the resource and subordinate resources immediately, disrupting involved sessions.
 - **Deactivate> Forced.** Deactivates the resource forcibly. Recommended for resources that do not respond to other deactivations.

To terminate the PU-LU Info window and return to the main window of the CiscoWorks Blue Maps application, select **File> Close**.

All About the PU-LU Info Window
