

Monitoring a LightStream 2020 Switch

This chapter tells you how to determine the status of a LightStream 2020 multiservice ATM switch (LS2020 switch) and its components. It shows command examples and explains how you can obtain additional information about the LS2020 components and subsystems. It includes the monitoring procedures for the LS2020 monitor, the LS2020 topology map, and the CLI.

Introduction to Monitoring

Three tools are available for monitoring the LS2020 switch: the LS2020 monitor program, the LS2020 topology map, and the CLI. The LS2020 monitor and topology map programs are based on a graphical user interface (GUI); the CLI is not. In the monitor program, you click on components to display information about them. In the topology map program, you click on components to display a map that represents the actual topology of the LS2020 network. In the CLI, you use various attribute arguments of the **show** command to display the value of specified parameters. When you issue a **show** command, the switch retrieves the requested information from the MIB. You may see a collection of MIB attributes displayed or you may see only a single attribute.

You can monitor the following LS2020 components and subsystems:

- Hardware components (chassis, card, port, DSU/CSU, modem, and redundant systems)
- Configuration and status (connections and processes)
- Alarm and LED status
- Test and Control System (TCS)
- SNMP parameters
- Traps

For a description of trap monitoring, see the *LS2020 Traps Reference Manual*.

Using the LS2020 Monitor

The LS2020 monitor provides a graphical display of individual LS2020 switches, cards, and ports. The LS2020 monitor runs only on a Sun SPARCstation. When you start the monitor application, the display shows the front of an LS2020 switch with bulkheads for the cards as they appear in the actual switch. Information pertinent to the switch displays above the bulkheads.

This section explains how to access the monitor to display switches, cards, and ports. The monitor application uses color to indicate the status of various entities; therefore, you must have a color monitor to make effective use of the monitor software.

To start the LS2020 monitor, follow these steps:

Step 1 Log in to the NMS workstation.

Step 2 Invoke the LS2020 monitor by selecting it from the HP OpenView menu or by entering the following command at the system prompt:

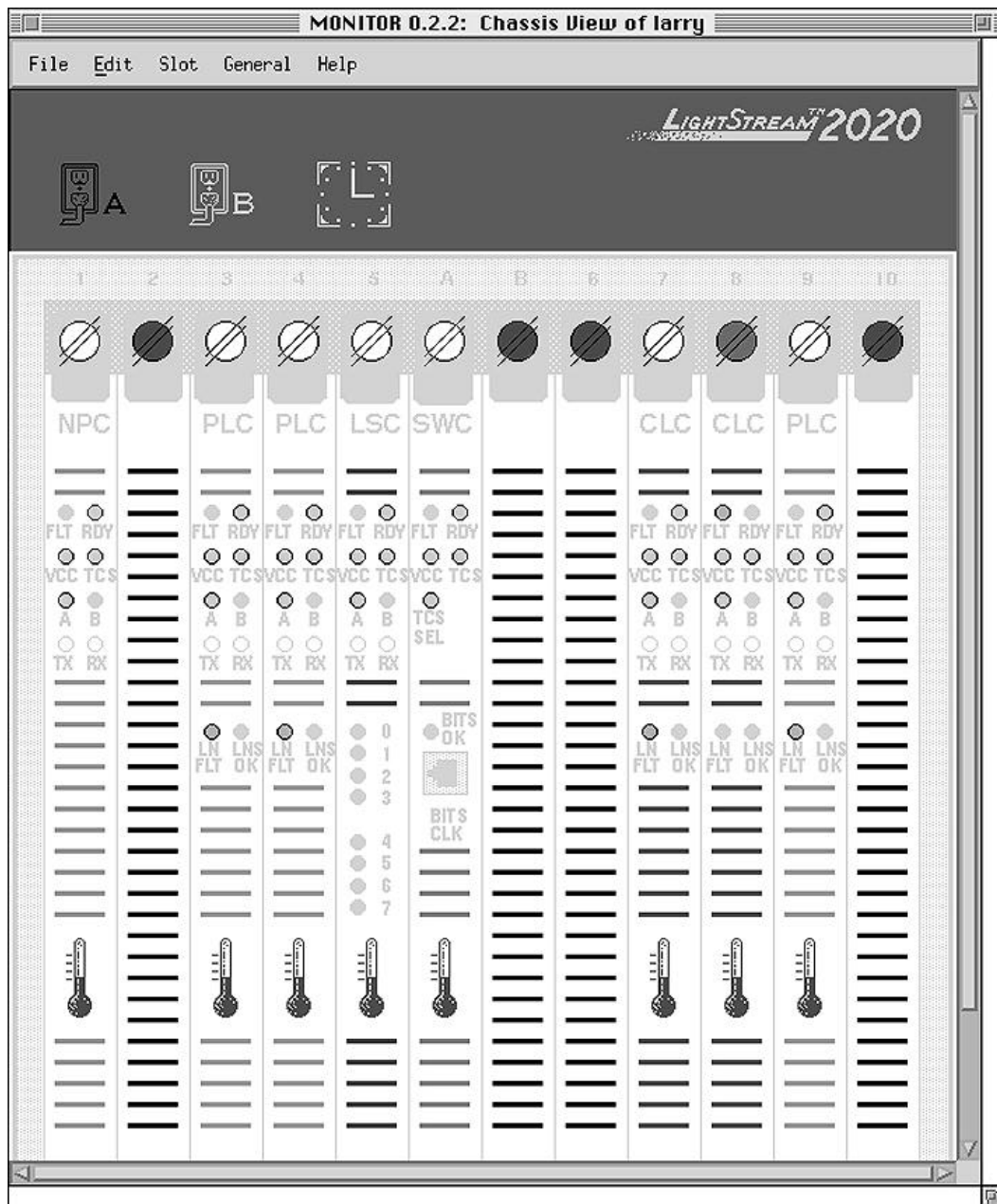
```
% monitor <chassisname>
```

Where

<chassisname> is the name of the node whose status you want to view.

A display similar to the one shown in Figure 4-1 is shown. It shows the front view of the LS2020 chassis, its components, and their status. The name that appears on the top of the LS2020 Monitor Chassis View window reflects the name of the chassis you selected to monitor. The front and rear displays are logical representations of the LS2020 chassis. They are not physical representations that you can modify.

Figure 4-1 Example of an LS2020 Monitor Chassis View



Selecting a Menu Option

To select a menu option from the top menu bar on the monitor display (see Figure 4-1), follow these steps:

Step 1 Point to the menu option (for example, File or Slot) and hold the mouse button down.

Step 2 Slide the mouse cursor down to display the available menu options.

Step 3 Release the button on the option to select it.

Table 4-1 lists the possible options. All menu options may not be available at all times. Availability depends on the display in the window. Available options are highlighted.

Table 4-1 Monitor Menu Options

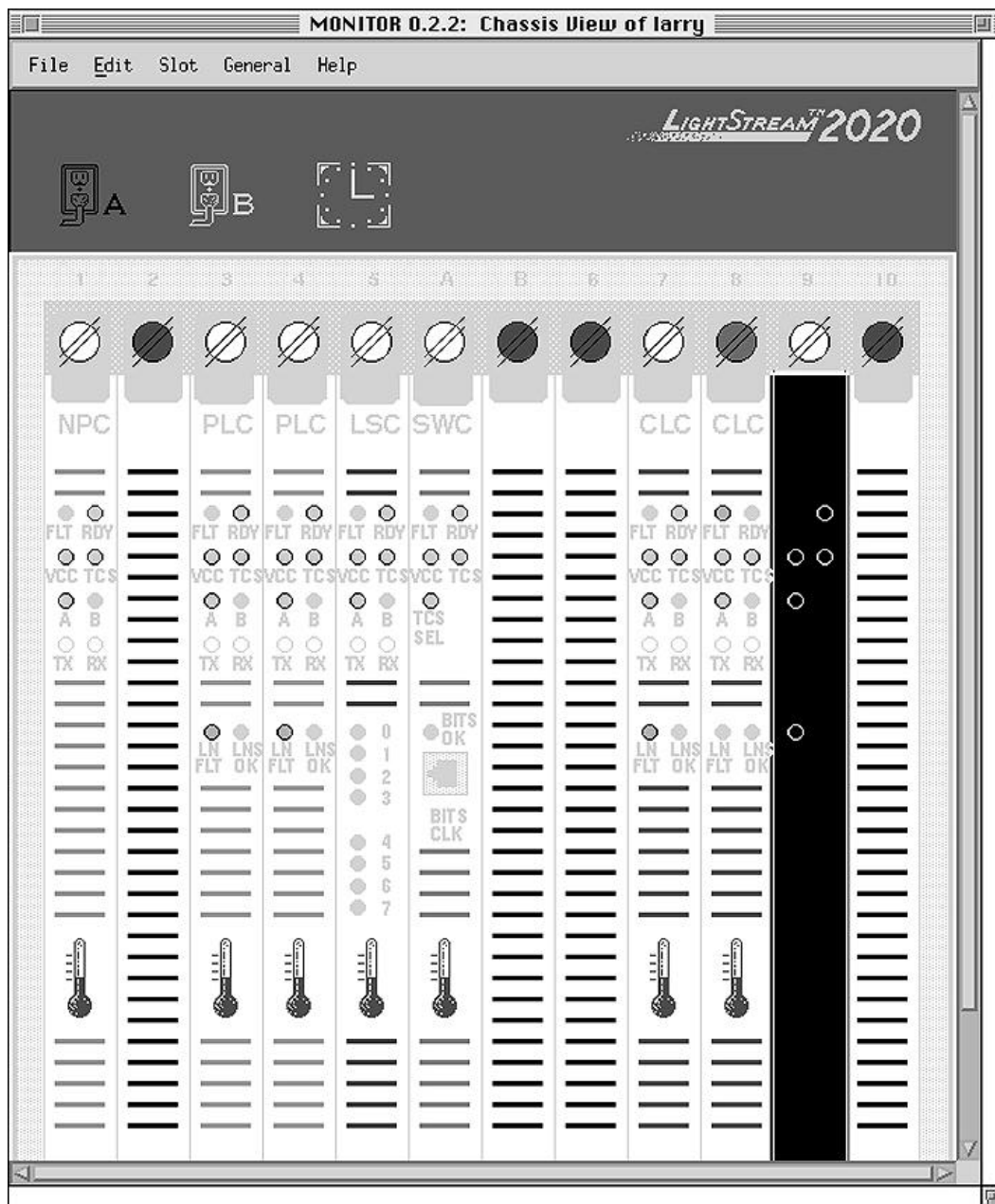
This menu...	Includes an option...	To let you...
File	Open New Chassis...	Open a window on a new chassis to monitor.
	Exit	Exit the monitor application.
Edit	No Options Available	
Slot	Open Selected Object	Open a new window for card, Nettime, chassis, or temperature status. Selecting this menu option is equivalent to double-clicking on the object.
	Show Access Card for Slot	Show the access card that is attached to the line card—for example, an FDDI or Ethernet card.
	Show Line Card for Slot	Show the line card that is attached to the access card—for example, a CLC or PLC.
	Show All Access Cards	Change the display to show all of the access cards instead of the line cards.
	Show All Line Cards	Change the display to show all of the line cards instead of the access cards.
General	snmp CLI	Start up a CLI session.
Help	On Help	Display this help text.
	On Version	Display the monitor version number.

Step 4 To close a monitor display, click in the Close box in the bar at the top of the window.

Selecting a Monitor Display Object

- Step 1** To select an object in the monitor display, click on it with the left mouse button. The object appears highlighted. Figure 4-2, for example, shows an LS2020 switch with a packet line card (PLC) selected. Selectable objects in the monitor display are cards, thermometer icons, bulkhead screws, and the LightStream logo.
- Step 2** To see more information for a particular object in the display, double-click on the object with the left mouse button or select the object with a single click of the left mouse button and click on the Open Selected Object option from the Slot pulldown menu.

Figure 4-2 Example of LS2020 Monitor Chassis View with Selected Card



Monitor Dialog Boxes

When you select an object, a dialog box is displayed. The LS2020 monitor application provides eight kinds of dialog box. There is no particular order in which you should invoke these windows. The dialog box you invoke depends on what type of information you want to display or what task you want to perform. The dialog boxes are as follows:

- Card window
- Chassis Status window
- CLI view of node name
- Help Topics
- Nettime Status window
- New Monitor process target
- Temperature window
- Version

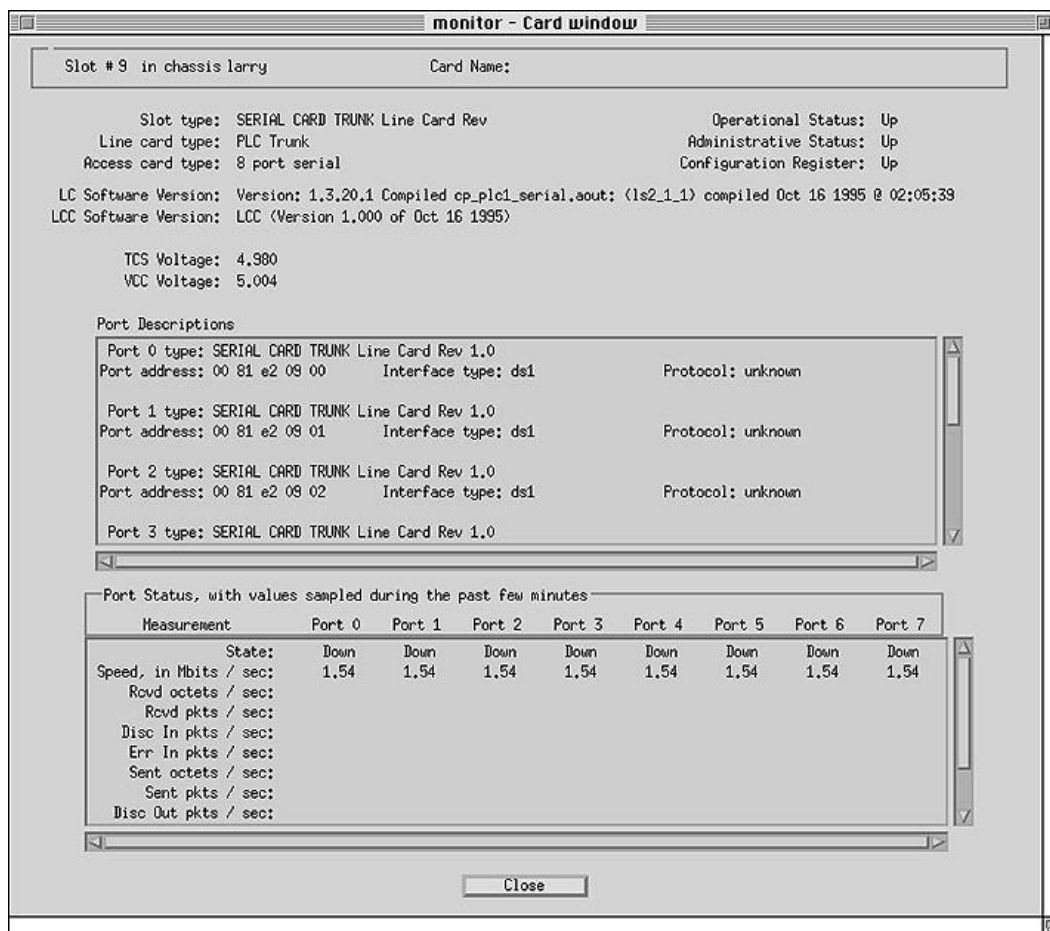
The next sections tell you how to open a dialog box and summarize the information that each box contains.

Note Information in the display box gets updated every 2 minutes—the default polling period. The polling period cannot be changed once the monitor program begins.

LS2020 Monitor Card Window

To open a new window for an NP or a line card, click on the card, and then click on the Open Selected Object option from the Slot pulldown menu. (Selecting this menu option is equivalent to double-clicking on the object.) A Monitor Card window is displayed (see Figure 4-3).

Figure 4-3 LS2020 Monitor Card Window

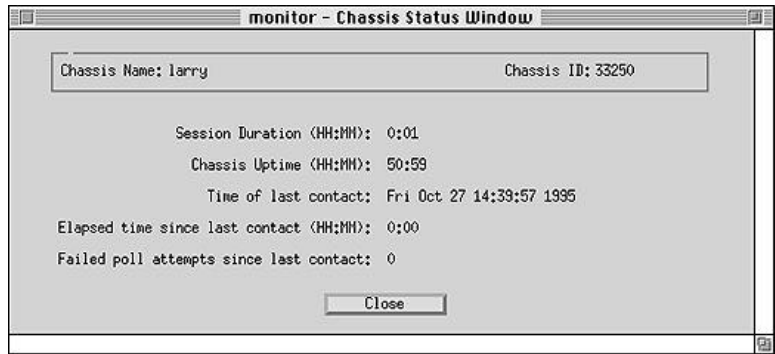


The Card window displays card and port status information and per-port statistics. You can use the vertical scroll bar to view all the relevant port information for the selected card. This window is capable of being displayed, but not edited or modified. However, the monitor application polls the target node for a fixed set of MIB objects and updates the dialog box approximately every 2 minutes.

Chassis Status Window

To view chassis information, double-click on the LS2020 logo in the upper-right corner of the monitor display (see Figure 4-1). A Monitor Chassis window is displayed (see Figure 4-4).

Figure 4-4 LS2020 Monitor Chassis Status Window

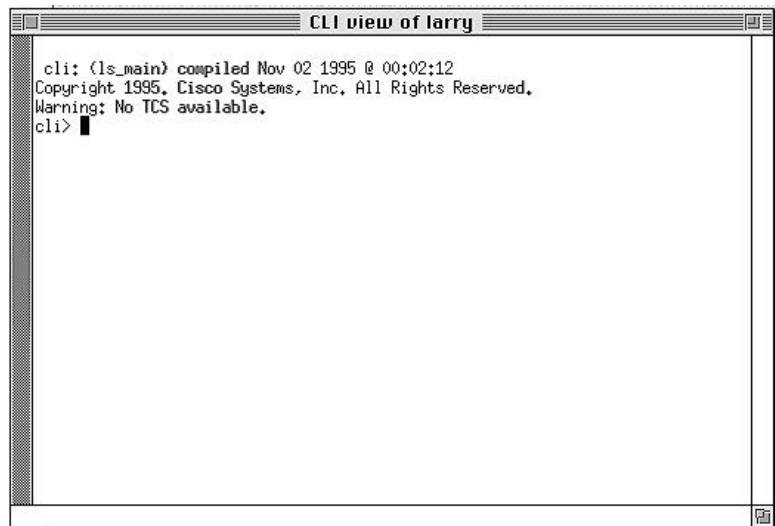


The Chassis Status window displays chassis-level information, such as the chassis name and chassis identification number. It also contains the duration of the monitor session, the time of the last contact with the node, and the time that has elapsed since the last contact.

CLI View Window

To open the CLI view window, click on the `snmp cli` option from the General pulldown menu. The CLI View window is displayed (see Figure 4-5).

Figure 4-5 LS2020 Monitor CLI View Window

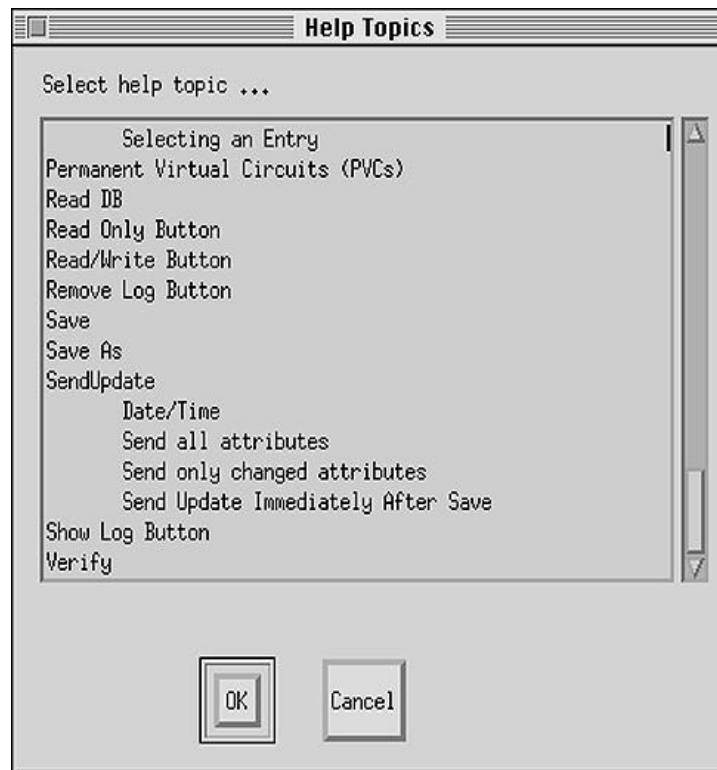


From the CLI view window, you can issue CLI commands to monitor and control the node. For more information about the CLI, see the "Command Line Interface" chapter or the *LightStream 2020 CLI Reference Manual*.

Help Topics Window

To access the Help Topics window, click on the On help option from the Help pulldown menu. The Help Topics window is displayed (see Figure 4-6).

Figure 4-6 Help Topics Window



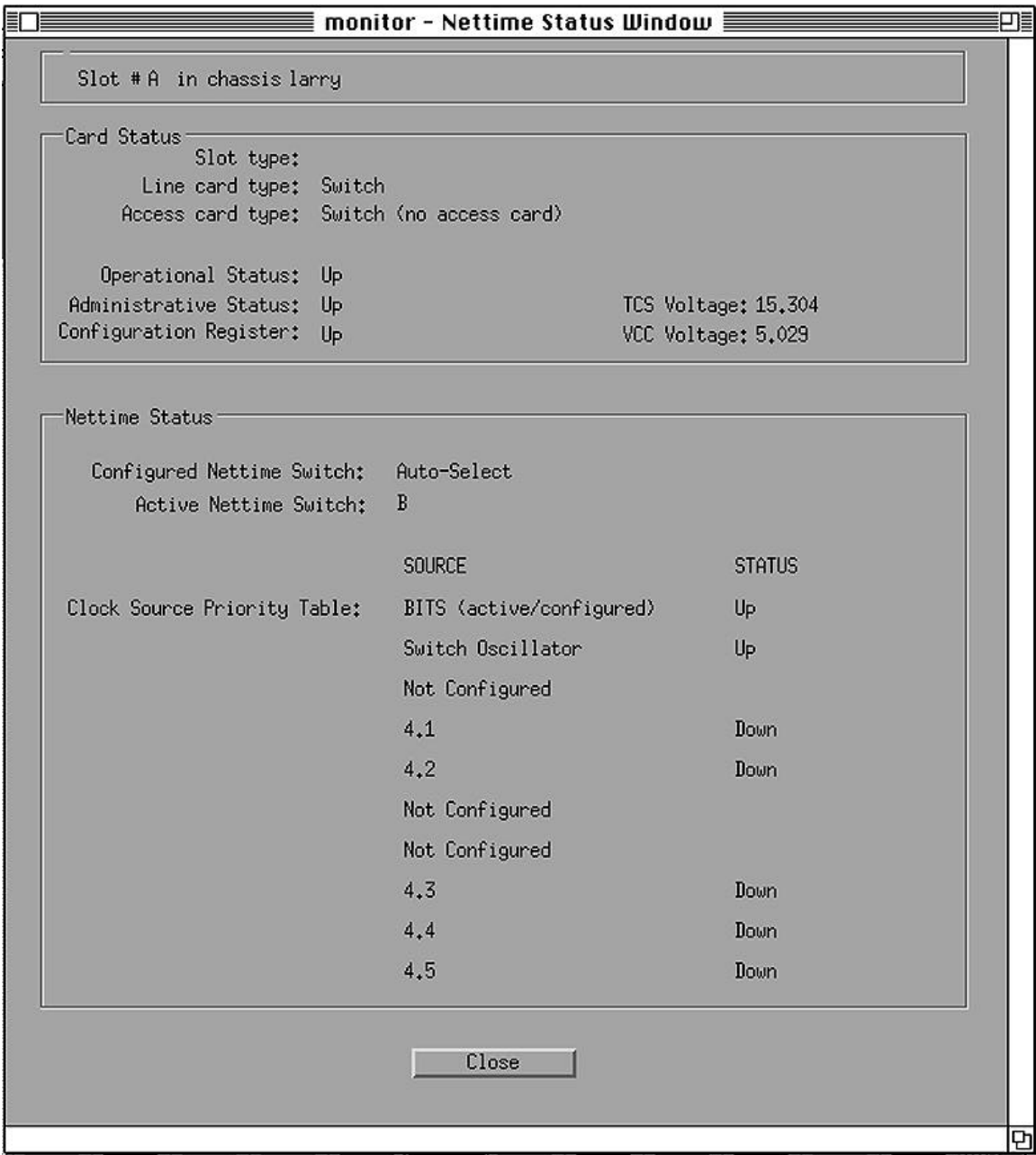
An index of help topics is listed. The help topics appear in alphabetical order. After you select the topic you want help on, click on OK or double-click on the topic itself. You can use the vertical scroll bar to view all the available help text for the selected topic.

Nettime Status Window

To open a new window for Nettime clock status information, double-click on an Release 2 SWC bulkhead (a bulkhead with a BITS OK LED). A Nettime Status window is displayed (see Figure 4-7).

Note The Nettime service is not supported on a chassis that contains an Release 1SWC card.

Figure 4-7 LS2020 Monitor Nettime Status Window



The Nettime service for a uses a switch card (SWC) to distribute a single reference clock to all the line cards in a given chassis.

The available sources for the reference clock are

- The building integrated timing source (BITS)
- The internal oscillator on the SWC
- A clock signal received from a line card port

You can configure up to 10 reference clock sources for the chassis, listed in order of preference. If the preferred source fails, Nettime automatically switches to the next most preferred source that is currently available. The monitor application polls the target node for the appropriate Nettime MIB objects and displays the results.

If a switch failure occurs in a chassis that contains a redundant switch, Nettime automatically uses the backup switch card to distribute the reference clock to the line cards on that chassis.

New Monitor Process Target Window

To open a new window to monitor a chassis, click on the Open New Chassis option from the File pulldown menu. The New Monitor Process Target window is displayed (Figure 4-8).

Figure 4-8 **New Monitor Process Target Window**

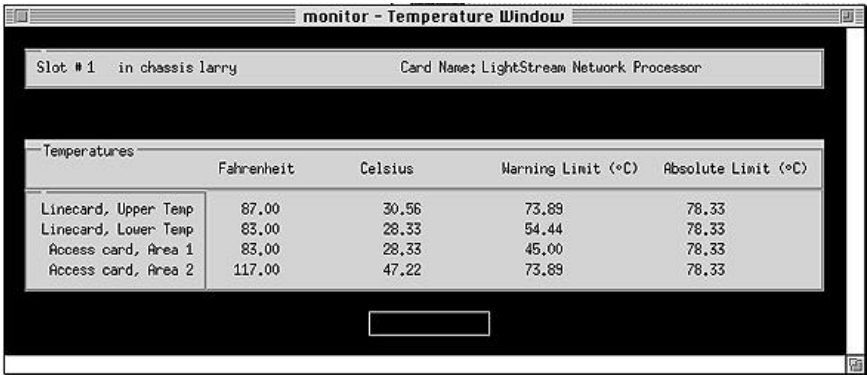


The system prompts you for the name of the new chassis you want to monitor. After you enter the name of the new chassis, a new monitor Chassis View window (see Figure 4-1) is displayed. You can continue to monitor the old chassis in the original window.

Temperature Window

To view temperature information, double-click on the thermometer icon on the line card bulkhead display (see Figure 4-1). A screen like the one shown in Figure 4-9 is displayed.

Figure 4-9 LS2020 Monitor Temperature Window

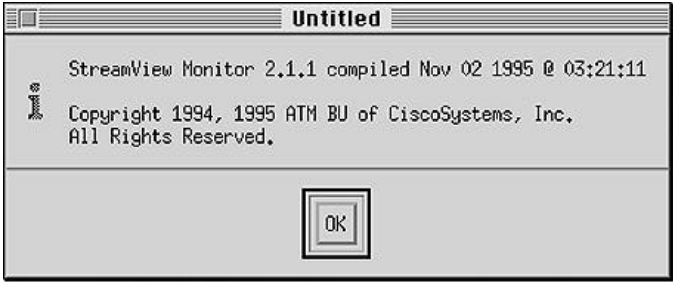


The Temperature window shows a summary view of the temperature values of the corresponding card. It also displays the warning and shutdown points for each card. The thermometer icons turn red when the card exceeds pre-defined temperature limits.

Version Window

To see the software version of the monitor application that you are using, click on the On Version option from the Help pulldown menu. A screen like the one shown in Figure 4-10 is displayed.

Figure 4-10 LS2020 Monitor Version Window



Interpreting Colors in the LS2020 Monitor Display

The LS2020 monitor application uses color to indicate the status of various objects. This section provides information about the following objects and their colors:

- Bulkhead paint bars and screws
- LED icon
- Nettime icon
- Power supply icon
- Thermometer icon

Bulkhead Paint Bars and Screws

The paint bars in the monitor graphical display of line card bulkheads correspond to the colors that are actually painted on the bulkheads of the cards. Table 4-2 lists the colors that represent the line cards.

Table 4-2 Line Card Bulkhead Paint Bar Colors

Line Card	Color ¹
Network processor card (NPC)	Red
Packet line card (PLC)	Orange
Cell line card (CLC)	Purple
Low-speed line card (LSC)	Dark blue
Medium-speed line card (MSC)	Light blue
Switch card (SWC)	Dark green

1. The color of the card does not change.

When a card goes down (ceases to operate), the bulkhead screw for that card turns red. If the card is up, the bulkhead screw is white.

LEDs

If an LED on the monitor display is shown as black, it is unlit. If an LED is shown as white, the monitor does not know its status either because the status is changing too rapidly or because the monitor does not have MIB support. Table 4-3 lists LEDs, their colors, and their meanings.

Table 4-3 LED Colors and Their Meanings

LED	Color	Meaning
FLT	Amber	The card has failed POST.
RDY	Green	The card has passed POST.
VCC: 5-volt power	Green	Voltage is within range.
	Red	Voltage is high.

LED	Color	Meaning
	Dark green	Voltage is low.
	Black	Voltage is less than 4 volts.
TCS: test and control system	Green	Voltage is within range.
	Red	Voltage is high.
	Dark green	Voltage is low
	Black	Voltage is less than 4 volts.
TCS SEL	Green	The switch card (SWC) is the master TCS hub (the TCS hub doing the polling). ¹
BITS OK	Green ²	<p>Indicates the following:</p> <ul style="list-style-type: none"> • External BITS reference clock (plugged into the BITS interface) is accurate. • The data is phase-locked. • There are no alarm indications. <p>If the previous conditions are not true, the LED is dark.</p>
TX	White	Unsupported.
RX	White	Unsupported.
LN FLT	Amber	At least one port on the card is configured as up (enabled), but is down (ceases to operate) or experiencing high error rates.
LNS OK	Green	At least one port on the card is configured up (enabled) and is operationally up with no errors.

1. In a system with a redundant switch card (SWC), this LED is lit for the master (primary) TCS hub card and is unlit for the secondary TCS hub card.

2. For this release, the BITS OK LED displays white.

Nettime Icon

The Nettime status icon appears directly to the right of the B Power Supply status icon. Table 4-4 lists the icon colors that indicate the status of the Nettime service.

Table 4-4 Nettime Status Icon Colors and Their Meanings

Icon Color	Meaning
Purple	Uninitialized. The status is unknown (the first poll of the node has not occurred yet).
Black	Nettime is unavailable on this chassis (usually because the chassis contains a Release 1 SWC card or an SNMP poll failed).
Green	Nettime is up and operating normally.
Yellow	Nettime is up, but the configured clock value is not the same as the active clock value and the configured clock status is down.
Orange	Nettime is up, but the active clock value does not match the configured clock value, and the configured clock status is up. This is slightly more serious than the yellow state because it may require more immediate operator intervention to bring the configured clock back to the “up” state.
Red	Nettime is up, but the active clock is not one of the clocks on the configured priority list or Nettime is in illegal state.

Power Supply Icon

There are two icons in the summary area (logo area) that indicate the status of the two power supplies (see Figure 4-1). Table 4-5 lists the icon colors that indicate the status of the power supply.

Table 4-5 Power Supply Icon Colors and Their Meanings

Icon Color	Meaning
Purple	Uninitialized. The status is unknown (the first poll of the node has not occurred yet).
Black	Power supply is missing.
Green	Power supply is operational.
Red	Power supply has failed.

Thermometer Icons

Thermometer icons are displayed on the bulkheads show on the LS2020 Monitor Chassis View screen (see Figure 4-1). Each icon shows various values for the card with which it is associated. These values include recorded temperature, warning point, and shutdown point. The values are also recorded in the MIB. Table 4-6 lists the colors used in the thermometer icon and indicates the significance of each.

Table 4-6 Thermometer Icon Colors and Their Meanings

Icon Color	Meaning
Blue	Temperature is normal.
Yellow-orange ¹	At least one temperature has reached it warning point.
Red-orange ¹	At least one temperature has reached its shutdown point.

1. The yellow and red icons each have an orange band around them to emphasize the abnormal condition.

Using the LS2020 Topology Map

The LS2020 topology map application displays a map that represents the actual topology of an LS2020 network. The map is a set of related objects, symbols, and submaps that provide a graphical and hierarchical presentation of the network.

The LS2020 topology map application runs on a Sun SPARCstation running HP OpenView. If you are not familiar with the HP OpenView Windows product, see the *HP OpenView User's Guide*. When you start HP OpenView, the LS2020 topology map application is automatically invoked. Once you start the application, it builds the current LS2020 submap and then periodically polls each LS2020 node for status information. When creating a new HP OpenView map, you can turn off the LS2020 topology function. You must have a color monitor to use the LS2020 topology map application.

The LS2020 topology map provides

- A view of the physical topology of an LS2020 network
- Autodiscovery and automatic entry of LS2020 nodes and trunks between nodes
- Verification of new nodes and trunks added to or removed from the LS2020 network
- Automatic placement of nodes
- Status information about each node and trunk
- A display of trunk connections between two LS2020 nodes
- Invocation of other StreamView applications (configurator and monitor)

Once the LS2020 submap is created, you can modify it by

- Moving nodes
- Changing node or trunk labels
- Grouping nodes into domains
- Deleting nodes or trunks
- Changing map attributes

You can also show multiple trunk connections, which are represented by meta-connection symbols. The symbol for a meta-connection is $\langle n \rangle$, where n is the number of connections being represented (see Figure 4-12).

Building a Topology

As previously mentioned, once you start HP OpenView, it can create any number of maps, and each map is able to be configured to build an LS2020 topology. However, you do not view a map directly. You view the submaps that make up the map. A submap is a particular view of the network environment. Each submap displays a different view of your map. The application creates a Root submap for each LS2020 map. The Root submap provides a standard, top-level submap for every network map.

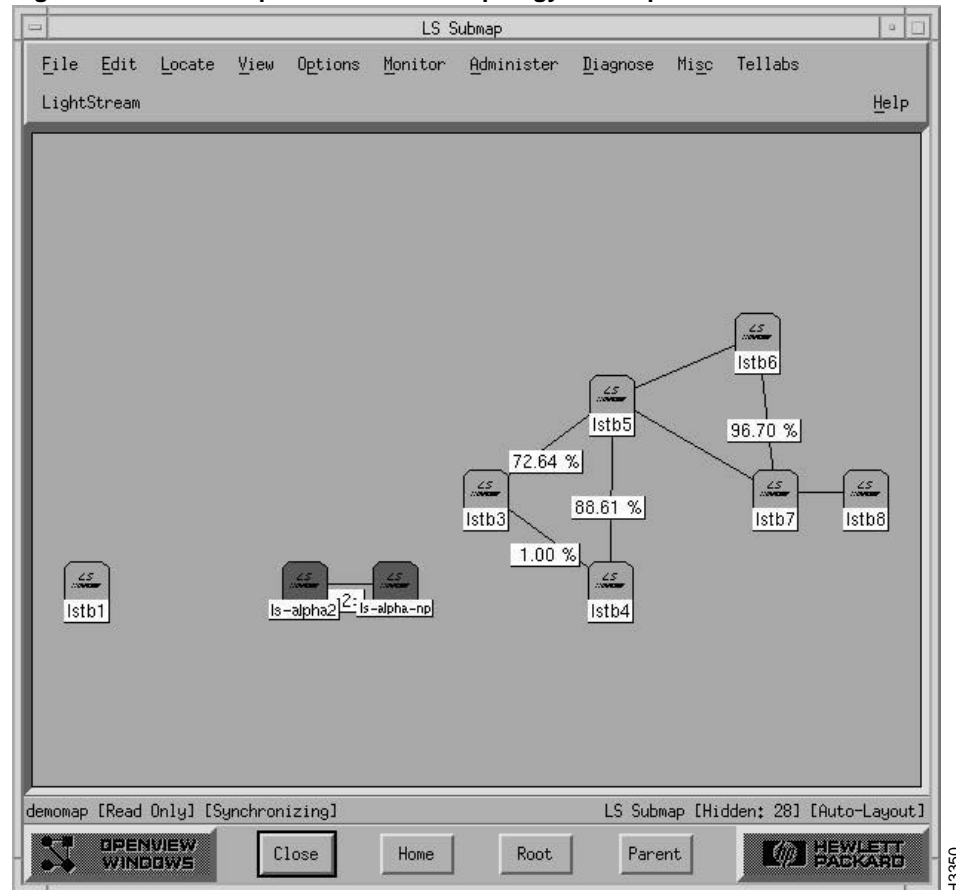
Figure 4-11 shows an example of a Root submap. In this figure, the Root submap contains two symbols: one that represents the Internet and another that represents an LS2020 network.

Figure 4-11 Example of a Root Submap



When you open a map, you actually view submaps of the map. To open the LS2020 submap, double-click on the LightStream symbol. Figure 4-12 shows a sample LS2020 topology submap.

In this example, the trunk between the ls-alpha2 and ls-alpha-np nodes actually represents two trunks, as indicated by the meta-connection symbol <2>.

Figure 4-12 Example of an LS2020 Topology Submap

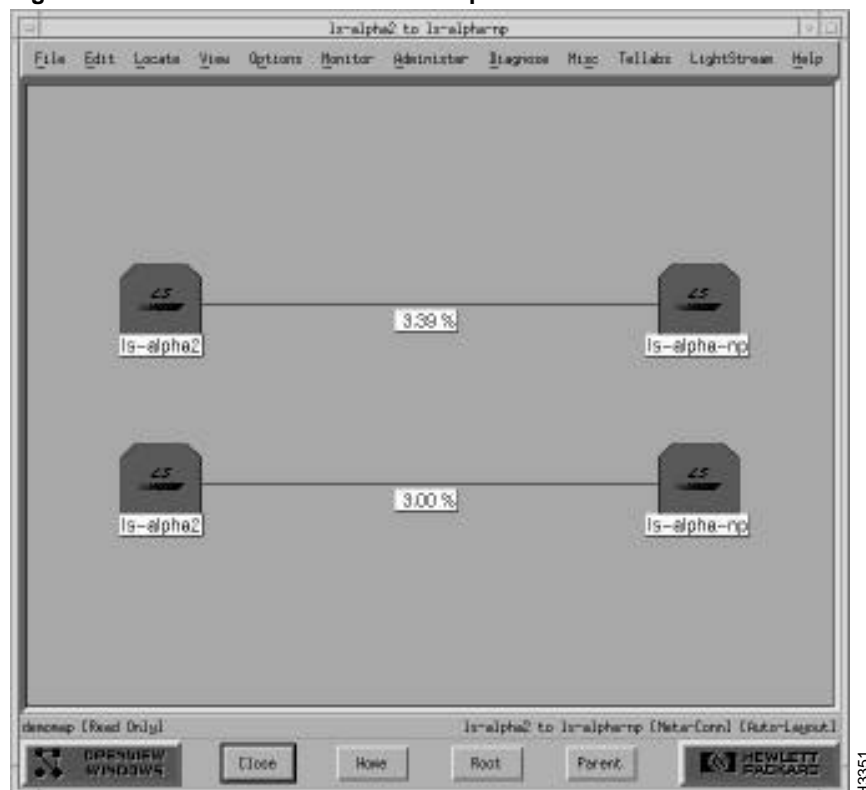
Displaying Meta-Connections

When a meta-connection is first drawn, its symbol is not displayed. To display a meta-connection symbol (see Figure 4-13), follow these steps:

- Step 1** Click the right mouse button on the trunk.
- Step 2** Select Describe/Modify Symbol... from the option menu.
- Step 3** Select the Display Label.

The next sections describe how to modify the LS2020 submap and view its meta-connection submap.

Figure 4-13 Meta-connection Submap



Creating LS2020 Domains

LS2020 domains (logical groups of nodes) can consist of any number of LS2020 nodes. All trunk connections between selected nodes and nonselected nodes are redrawn between the LS2020 domain and the non-selected nodes. Any meta-connections between an LS2020 domain icon and either another LS2020 domain or a node show the two nodes that are connected. When you show an exploded view of an LS2020 domain icon, the nodes that make up the domain and any trunk connections between these nodes are displayed.

To create an LS2020 domain, follow these steps:

- Step 1** Select the LS2020 nodes that you want grouped together.
- Step 2** Pull down the LightStream menu from the menu bar, and click on Topology...Build Domain.

The selected nodes are removed from the map and replaced by a single domain icon.

Removing an LS2020 Domain

When you remove a domain from the topology map, the LS2020 nodes that were originally grouped in that domain are redrawn onto the current submap. To remove an LS2020 domain, follow these steps:

- Step 1** Select the domain you want to remove.
- Step 2** Pull down the LightStream menu from the menu bar, and click on Topology...Remove Domain.

Deleting a Node or Connection

If you want to remove a node or connection from the LS2020 submap, follow these steps:

Step 1 Double-click on the node or trunk that you want to delete.

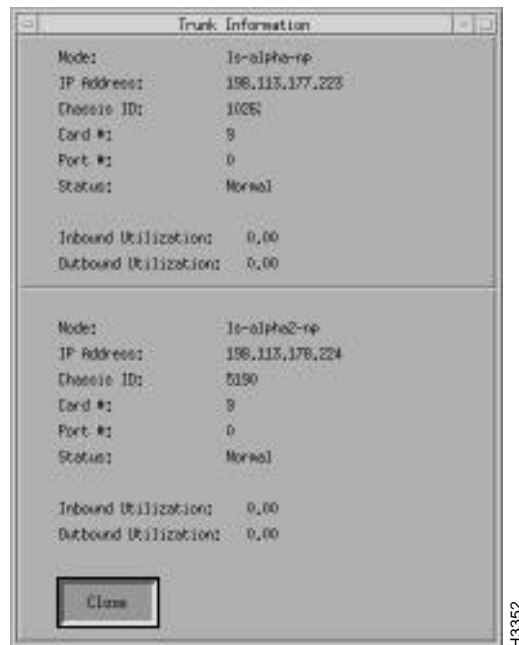
Step 2 Pull down the Edit pulldown menu on the menu bar, and click on Delete.

When you remove a node or trunk connection from the LS2020 submap, it is rediscovered and placed back on the map. To prevent this from happening, click on Hide on the Edit menu. This option keeps a node or trunk connection from being rediscovered and placed back into the submap.

Displaying Trunk Information

Within the LS2020 submap, a trunk connection is displayed including its interface bandwidth. If you want to get chassis, port, and utilization information about this connection, click the left mouse button on a trunk. A pop-up dialog box appears and information similar to the following displays (see Figure 4-14).

Figure 4-14 Example of a Trunk Connection



Updating a Topology

The LS2020 topology map periodically queries each LS2020 node for its trunk information to see if new trunks have been added or known trunks have been removed. It also communicates with HP OpenView for any new objects that are discovered. If new objects are found, the LS2020 topology map checks to see if the object's SysOid number matches its own.

Changing LS2020 Topology Map Attributes

The LS2020 submap attributes that you can modify are

- LTM enabled/disabled
- Status polling interval
- Timeout for trunk removal
- Rules
- Timeout to clear a rule
- Marginal/major status timeout

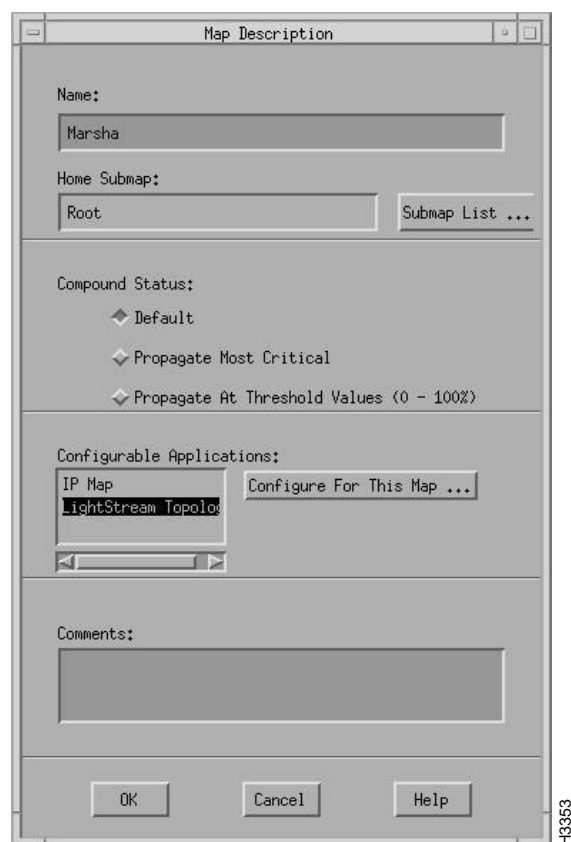
The next sections provide a brief description of the attributes and the steps for changing them.

Procedure to Change the LS2020 Topology Map Attributes

You can modify these attributes from either the OpenView Root dialog box or the LS2020 Submap dialog box:

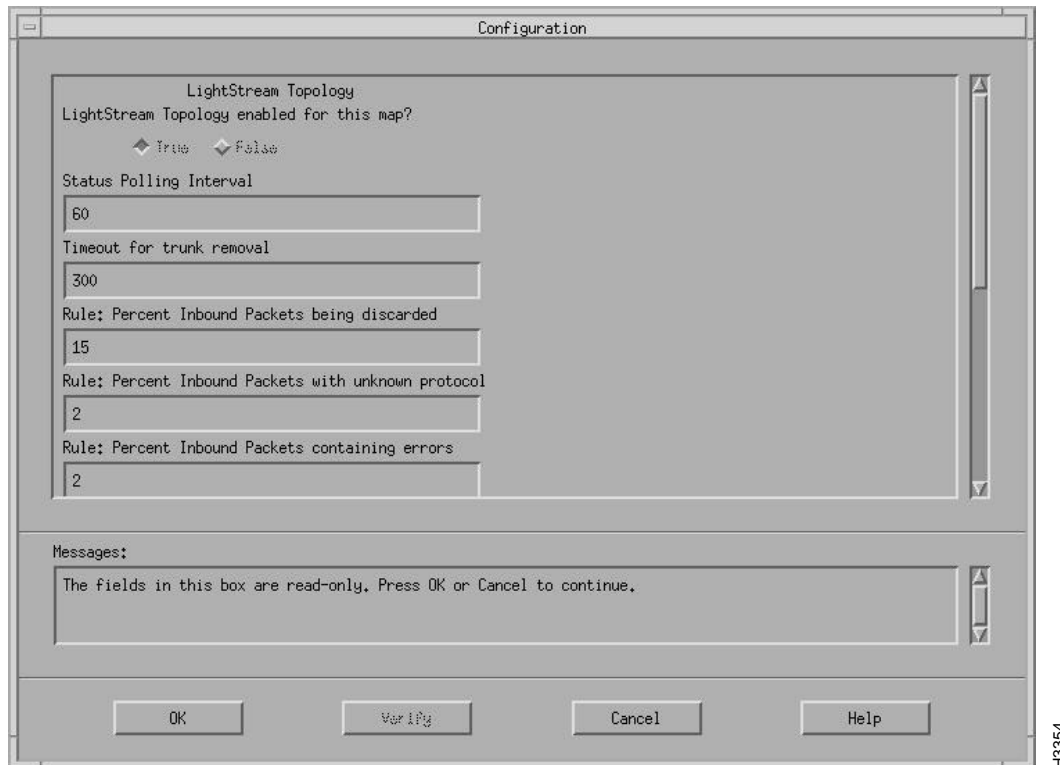
- Step 1** Pull down the File menu on the menu bar, and click on Describe/Modify Map. The Map Description dialog box appears (see Figure 4-15).

Figure 4-15 Example of Map Description Dialog Box



- Step 2** Click on the appropriate entry in the Configurable Applications list.
- Step 3** Click on the Configure for this Map button. For example, if you click on the LS2020 Topology Map, the Configuration box appears (see Figure 4-16).

Figure 4-16 Example of Configuration Dialog Box



From the Configuration box, you can enable or disable the LS2020 topology map and select the attributes that you want to modify, such as status polling interval, timeout for trunk removal, and so on.

LTM Enabled/Disabled

The default is to enable the LS2020 topology map when you start HP OpenView.

Status Polling Interval

The LS2020 topology map application polls each LS2020 node periodically for status information (the default polling time is 60 seconds).

Status changes in the network are displayed through changing colors on the network map and writing messages to HP OpenView Alert window.

Status Definitions

Table 4-7 lists the possible status conditions of a node in the network and their meanings. Table 4-8 lists the same information for a trunk connection in the network.

Table 4-7 Node Status Definitions

Status	Meaning
Unknown	Unable to access the node through SNMP.
Critical	One of the following problems has been detected: a chassis ID conflict, a bad power supply, abnormal temperature, or a diagnostic error on a card.
Major	One or more cards within the node reported a down operational status.
Marginal	One of the following problems on an edge port has been detected: congestion, high error rate, large amount of discarded traffic, or attempt to use an improperly configured PVC. If any of these problems is detected, a message appears in the HP OpenView Events window. Note that for Release 2.1 edge port monitoring is turned off.
Normal	No known problems detected.
Unmanaged	The user has configured the node to be unmanaged.

Table 4-8 Trunk Connection Status Definitions

Status	Meaning
Critical	The ifOperStatus reported down for either port in the connection, or the trunk is no longer being discovered in the GID table.
Testing	The ifOperStatus reported testing for either port in the connection.
Normal	No known problems detected.
Major	One of the following problems on either of the ports on the trunk connection has been detected: high number of packets being discarded, high trunk utilization, high error rate, or attempt to use an improperly configured PVC. If any of these problems are detected, a message appears in the HP OpenView Events window.
Warning	One of the following problems on either of the ports on the trunk connection has been detected: high number of packets with unknown protocols being received or the output queue length is excessively high.
Unmanaged	The user has configured the trunk to be unmanaged.
Unknown	Unable to get port information through SNMP.

Timeout for Trunk Removal

The default for the timeout for trunk removal attribute is 300 seconds.

Rules

The LS2020 topology map application collects information for each interface to determine the condition of the LS2020 network. There are rule definitions that apply to the data collected. For example, the default value for the percent of inbound packets being discarded is 15 percent. If the percent of packets being discarded exceeds either the default value or the value you set, a message gets logged to the HP OpenView Alert window. You can change the default value according to your network needs. Table 4-9 lists the rules and their default values that are applied to the data collected.

Table 4-9 Rule Definitions

Rule	Default Value
Percent inbound packets being discarded	15%
Percent inbound packets with unknown protocol	2%
Percent inbound packets containing errors	2%
Percent outbound packets being discarded	15%
Percent outbound packets containing errors	2%
High output queue length	10

Marginal/Major Status Timeout

Marginal status indications for nodes and major status indications for connections indicate potential network integrity problems. Once a problem is discovered, such as a large number of packets being discarded, the appropriate status is set. The status remains in effect until a time period (the default is 5 minutes) elapses without the problem being discovered. To change the default, select the File...Describe/Modify menu item.

Using the CLI to Monitor Hardware Components

This section provides the steps for monitoring the hardware components of an LS2020 switch:

- Chassis
- Cards
- DSU/CSUs
- Ports
- Modems
- Redundant components

Monitoring a Chassis

To monitor the chassis, follow these steps. The information that displays applies to the LS2020 switch.

Step 1 Verify that the target switch is correct by entering the following at the `cli>` prompt:

```
cli> show snmp
```

If you need instructions on changing the target switch, see the section on “Setting the Target Switch for CLI Commands” in the chapter entitled “Command Line Interface.”

Step 2 Enter the following at the `cli>` prompt:

```
cli> show chassis <parameter>
```

Where

<parameter> is all (default)
 general
 agent
 congestion
 primaryswitch

```

powersupply
cards
listff
listdlci
listvci
listtrunk
listpvc

```

The following example shows what information displays when you enter **show chassis all**.

```

Name: node_A
Description: Cisco LightStream 2020 ATM Switch
Contact: Rick Bell
Location: Saturn
System Up Time 95 Hr 12 Min 47 Sec

Software Version: 2.1.1-S1-0
Console Trap Level: Oper
Chassis ID: 5143
Slot of Primary NP: 1
Slot of This NP: 1

Primary Addr: 198.113.179.15
Secondary Addr: 0.0.0.0
Subnet Mask: 255.255.255.0
Ethernet Address: 198.113.178.15
Ethernet IP Mask: 255.255.255.0
Default Router: 198.113.178.1

MMA Trap Filter Level: Oper
MMA Trap Logging State: On
MMA Collection Size: 32 KB
Config DB Active: On

MMA PID: 56
Configuration Host:
Configuration Author:
Configuration ID: 2

Maximum Interval between Permit Limit Updates: 5000 ms.
Minimum Interval between Permit Limit Updates: 1000 ms.
Minimum Interval between CA Updates: 1000 ms.

Switch: Switch A
Power Supply A: Empty
Power Supply A Type: Empty
Power Supply B: Good
Power Supply B Type: 1200W AC Power Supply

Slot 1: NP
Slot 2: OC3 Trunk
Slot 3: OC3 Edge
Slot 4: T3 Trunk
Slot 5: T3 Edge
Slot 6: MS Trunk
Slot 7: Serial Edge
Slot 8: OC3 Trunk
Slot 9: FDDI
Slot 10: Ethernet
Slot SA: Switch2
Slot SB: Empty

```

This chassis has no Frame Forwarding connections

This chassis has no Frame-Relay DLCIs

ATM-UNI VCI list:										

S	Node	Port	VCI	Node	Port	VCI	IR	IB	MR	MB
	lstb5	3.0	4000	<-> lstb3	8.0	4000	882	300	882	300
	lstb5	3.0	4001	<-> lstb3	8.0	4001	882	300	882	300
	lstb5	3.0	4002	<-> lstb3	8.0	4002	882	300	882	300
*	lstb5	3.0	4003	<-> lstb3	8.0	4003	882	300	882	300
	lstb5	3.0	5000	<-> lstb3	8.0	5000	882	300	882	300
	lstb5	3.0	5001	<-> lstb3	8.0	5001	882	300	882	300
	lstb5	3.0	5002	<-> lstb3	8.0	5002	882	300	882	300
	lstb5	3.0	5003	<-> lstb3	8.0	5003	882	300	882	300
	lstb5	3.0	5004	<-> lstb3	8.0	5004	882	300	882	300

Note The column labeled S indicates the state of the connection. If there is an asterisk in the state column for a particular connection, the connection is down. If the state column is blank, the connection is up.

If you enter any parameter except **all**, a subset of the **show chassis** output is displayed. For example, if you enter the command **show chassis agent**, information similar to the following is displayed:

```
cli> show chassis agent
MMA Trap filter Level:      Oper
MMA Trap Logging State:    On
MMA Collection Size:       32 KB
Config DB Active:         On
MMA PID:                   11
Configuration Host:        boston
Configuration Author:      Bob Williams
Configuration ID:          26
cli>
```

Monitoring Cards

You can monitor network processor (NP) cards, edge cards, trunk cards, and switch cards. You select the card you want to monitor by specifying its card number (slot number). To determine a card's slot number, you can look at the front of the system to see the numbered slots (see Figure 4-1) or you can type **show chassis cards** in cli to display a list. When you specify a card, you also get information on its associated access card. To monitor the cards in the LS2020 switch, follow these steps.

Step 1 Verify that the target switch is correct by entering the following at the **cli>** prompt:

```
cli> show snmp
```

If you need instructions on changing the target switch, see the section on "Setting the Target Switch for CLI Commands" in the chapter entitled "Command Line Interface."

Step 2 Enter the following at the **cli>** prompt:

```
cli> show card <card #> <parameter>
```

Where

<card #> is the slot in which the card you want to monitor is located.
1 to 2 for NP cards
2 to 10 for line cards
switcha or switchb for switch cards

<parameter> is all (default)
name (no information available for switch cards)
processid
status
version
peak-cell-rate
hardware
ports (no information available for NP or switch cards)

The results of this command vary, depending on the type of card in the slot. If you enter any parameter except the **all** parameter, a subset of the attributes is displayed.

When you enter **show card 5 all**, information similar to the following (for a medium-speed card) is displayed:

```
cli> show card 5 all
Card Name:          emtb7.5_ms-t
Card PID:           31
Operational Status: Up
Administrative Status: Up
Configuration Register: Up

Maximum Number of VCs: 800

LC Software Version:  Version: 1.3.20.1 Compiled cp_ms1.aout: compiled Oct 16 1995 @
09:51:16 in /u2/mszczesn/ls2_1_1/cmd/ms1_cp
LCC Software Version:  LCC (Version 1.000 of Oct 16 1995)

Card Type:          MS Trunk
Top Temperature:    72 F (22 C)
Bottom Temperature: 70 F (21 C)
TCS Voltage:        4.931 volts
VCC Voltage:        4.980 volts
VEE Voltage:        2.499 volts
Access Card Region 1 Temperature: 68 F (20 C)
Access Card Region 2 Temperature: 71 F (21 C)
```

Port	Protocol	Name	Admin Stat	Oper Stat
----	-----	----	-----	-----
5.0	MS Trunk	tb7.5.0-tr-t	Up	Up
5.1	MS Trunk	tb7.5.1-tr-t	Up	Up

cli>

Monitoring DSU/CSU Statistics

The **csumon** tool, available from the LynxOS shell, lets you monitor the DSU/CSU for the following:

- Low-speed line card

- Medium-speed line card

In addition, you can use **csumon** to issue commands to an external DSU/CSU attached to a low-speed interface.

Monitoring the DSU/CSU on a Low-Speed Line Card

You can obtain CSU statistics by connecting to an external data service unit/channel service unit (DSU/CSU) from an LS2020 switch through a serial line. This provides a terminal to the DSU/CSU. You use its own interface to set up and monitor the DSU/CSU. (See the documentation for the DSU/CSU for details.)

Step 1 Connect the LS2020 switch to the external DSU/CSU by connecting an EIA/TIA-232 serial cable from the control port on the fantail to the CSU craft (or console) port.

Note EIA/TIA-232 was known as recommended standard RS-232 before its acceptance as a standard by the Electronic Industries Association (EIA) and Telecommunications Industry Association (TIA).

Step 2 To access the bash prompt, log in as root or fldsup on the LS2020 switch to which the DSU/CSU you want to monitor is attached.

Step 3 Test the connection by using the following command:

```
LSnode:# csumon <.card.port#>
```

Where

<.card.port#> is The target switch card and port number in the LS2020 switch, entered in .card.port format (card 2 to 10; port 0 to 7)

Note You must use the leading “.” in the card and port entry shown above.

Figure 4-17 shows a screen displaying the kind of information you might see in a DSU/CSU status display. The display you see may vary, depending on the DSU/CSU you are using.

Figure 4-17 Example Showing csumon Display for a Low-Speed Line Card

```
bash$ csumon .7.5

===== P O R T 5 =====
Current  Intrvl 7      Total
PES      0          0         2
PSES     0          0         2
SEFS     0          0         2
UAS      0          0         6
LCV      0          0         0
PCV      0          0         2
LES      0          0         0
CCV      0          0         2
CES      0          0         2
CSES     0          0         2

===== P O R T 6 =====
Current  Intrvl 7      Total
PES      0          0         2
PSES     0          0         2
SEFS     0          0         2
UAS      0          0         9
LCV      0          0         0
PCV      0          0         0
LES      0          0         0
CCV      0          0         0
CES      0          0         2
CSES     0          0         2

CONFIG T1, NORM, CBIT, SHORT
STATUS OK

CELLS IN: 20936 OUT: 20998
=====
Enter: ? to refresh, + to increment interval, - to decrement interval
```

H3326

Note While the statistics are displayed, you can refresh the screen or alter the counter display. See the last line in the previous screen display for instructions on how to do this.

- Step 4** Terminate the display by pressing ^C. This returns you to the bash prompt.
- Step 5** To learn about commands you can issue to the DSU/CSU, consult its documentation. To obtain help on **csumon**, enter the following command:

```
LSnode:1# csumon
```

Monitoring the DSU/CSU on a Medium-Speed Line Card

The medium-speed line card (MSC) has a built-in DSU/CSU. Use the following steps to monitor and display the DS3 MIB statistics for MSC ports. MSC CSU statistics are available through use of the standard DS3 MIB variables.

- Step 1** To access the bash prompt, log in as root or fidsup to the LS2020 switch.
- Step 2** Enter the following:

```
LSnode:1# csumon <.card.port#>
```

Where

<.card.port#> is the target switch card and port number in the LS2020 switch, entered in .card.port format (card 2 to 10; port 0 to 7).

Note You must use the leading “.” in the card and port entry previously shown.

A screen similar to the one in Figure 4-18 is displayed. Although you enter only one port number, information for both ports on the MSC displays.

Figure 4-18 Example Showing csumon Display for a Medium-Speed Line Card

```
LSnode:2$ csumon .7.0

MS1 Line Card S/W Version:      1.2
Time Since Line Card Boot:      1 hour 46 minutes 9 seconds
Current Interval Elapsed Time:  1 minute 7 seconds
Number of Valid Intervals:      7

===== P O R T 0 =====      ===== P O R T 1 =====
Current  Intrvl 7      Total      Current  Intrvl 7      Total
PES      0          0          2          0          0          2
PSES     0          0          2          0          0          2
SEFS     0          0          2          0          0          2
UAS      0          0          804         0          0          804
LCV      0          0          1786        0          0          1786
PCV      0          0          2           0          0          0
LES      0          0          0           0          0          0
CCV      0          0          2           0          0          0
CES      0          0          2           0          0          2
CSES     0          0          2           0          0          2

-----
CONFIG T3, NORM, CBIT, SHORT
STATUS OK

-----
CELLS IN:  20936  OUT:      20998      IN  20925  OUT:      20990
=====
Enter: ? to refresh, + to increment interval, - to decrement interval
```

H3327

Note While the statistics are displayed, you can refresh the screen or alter the counter display. See the last line in the previous screen display for instructions on how to do this.

The DS3 MIB maintains these counters over a 24-hour period in 15-minute intervals. The Total column in the display includes up to 96 complete intervals. The Current column includes all counts that will make up the next complete interval. The Intrvl column shows the selected complete interval (from 1 to 96), depending on the actual number of complete intervals. The values that change are updated once per second.

Table 4-10 and Table 4-11 list the counters and their definitions.

Table 4-10 csumon Display Term Definitions

Counter ¹	Definition
PES	P-bit Errored Seconds
PSES	P-bit Severely Errored Seconds
SEFS	Severely Errored Framing Seconds
UAS	UnAvailable Seconds
LCV	Line Coding Violations
PCV	P-bit Coding Violations
LES	Line Error Seconds
CCV	C-bit Coding Violations
CES	C-bit Errored Seconds
CSES	C1-bit Severely Errored Seconds

1. See RFC 1407 for a further description of these counters.

Table 4-11 csumon Status Term Definitions

Status Term	Definition
OK	No alarms present
RED	Loss of Framing
YELLOW	Far End Receive Failure
BLUE	Receiving an Alarm Indication Signal

Step 3 Terminate the display by pressing **^C**. This returns you to the bash prompt.

Step 4 To obtain help on **csumon**, enter the following command at the bash prompt:

```
LSnode:1# csumon
```

Monitoring Ports

These steps allow you to monitor the ports on a particular card. You can look at information for a single port, a collection of ports, or a range of ports.

Note No information is available for ports on NP and switch cards.

Step 1 Verify that the target switch is correct by entering the following at the **cli>** prompt:


```
cli> show snmp
```

If you need instructions on changing the target switch, see “Setting the Target Switch for CLI Commands” in the chapter entitled “Command Line Interface.”

Step 2 Enter the following at the `cli>` prompt:

```
cli> show port <port#> <parameter1> <parameter2>
```

Where

`<port#>` is the number of the port for which information displays. The port number is in card.port format (card is 2 to 10; port is 0 to 7).

`<parameter>` is

- all (default)
- name
- status
- statistics
- physical
- frameforward
- framerelay
- listdlci
- listpvc
- listvci
- dlci
- vci
- cbrpvc
- vpi
- fddi
- datarate
- wgrp
- bflt
- ipflt
- ipxflt
- np-deliver
- sonet
- stb
- bflt-def
- ipflt-def
- ipxflt-def
- bcast-limit

An example for each of the port types is shown in this section. Figure 4-19 shows an example of the display you see when you enter **show port 5.0 all** for an MS trunk port.

Figure 4-19 Example of the show port all 5.0 Command for an MS Trunk Port

```
cli> show port 5.0 all
Description:                Medium Speed Trunk Line Card Rev 1.0
Port Name:                  Light5.5.0_t3
Port Type:                  MS Trunk
MIB2 Type:                  ds3
Port MTU:                   53 Octets
Port Speed:                 44736000 bps

Admin Status:               Up
Oper Status:                Up
Last Oper Change:           13 Hr 45 Min 21 Sec ago

Octets Rcvd:                7247432
Normal Packets Rcvd:        136744
Multicast Packets Rcvd:     0
Discarded Rcvd Packets:     26
Receive Errors:             294
Unknown Protocols Rcvd:     0
Octets Sent:                7347920
Normal Packets Sent:        164430
Multicast Packets Sent:     0
Discarded Output Packets:   0
Output Errors:              26

Oper Protocol:              T3 Trunk
Admin Protocol:             T3 Trunk
Port Data Cell Capacity:    93120 cells
Port Available Capacity:    93120 cells
Link Transmit Utilization:  22
Cell Payload Scrambling:    Disabled
Cable Length (in feet):     0±450
Framing Type:                Clear Channel
cli>
```

Note When the Operational Status for the trunk port is down, the Port Available Capacity field shows the capacity that has been configured for the trunk port, rather than a capacity of zero (0).

Figure 4-20 and Figure 4-21 are examples of the display you see when you enter **show port 3.0 all** for a Frame Forwarding port.

Figure 4-20 Example of the show port all 3.0 Command for a Frame Forwarding Port

```

cli> show port 3.0 all
Description:                Low Speed Edge Line Card Rev 1.0
Port Name:                  Light5.3.0_ff
Port Type:                  LS Edge
MIB2 Type:                  ds1
Port MTU:                   1516 Octets
Port Speed:                 1536000 bps

Admin Status:               Up
Oper Status:                Up
Oper loop:                  none
Admin loop:                 none
Last Oper Change:           13 Hr 43 Min 56 Sec ago

Octets Rcvd:                 42162
Normal Packets Rcvd:         4885
Multicast Packets Rcvd:      0
Discarded Rcvd Packets:      0
Receive Errors:              0
Unknown Protocols Rcvd:      0
Octets Sent:                 42564
Normal Packets Sent:         4945
Multicast Packets Sent:      0
Discarded Output Packets:    0
Output Errors:               0

Port Type:                   v35
Oper CSU Type:               Unknown
Admin CSU Type:              Unknown
Oper DCE Bit Rate:           1536000 bps
Admin DCE Rcv Bit Rate:      1536000 bps
Oper DCE Xmit Bit Rate:      1536000 bps
Measured Bit Rate:           1536000 bps
Link Transmit Utilization:    0 cells/sec
Admin Expected DTE Rate:     1536000 bps
Oper Net Interface Type:     dte
Admin Net Interface Type:    dte
Oper Protocol:                Frame Forwarding
Admin Protocol:               Frame Forwarding
LC Auto Enable State:         Disabled
LC Debug Level:               0
Port Data Cell Capacity:      0 cells
Port Available Capacity:      0 cells

```

(Continued)

Figure 4-21 Example of the show port Command for a Frame Forwarding Port (Concluded)

```

Call Setup Retry Time:      0
Call Setup Backoff Time:   0
Oper Max Frame Size:       1516
Modem Status:              DCD:0   DSR:0

Src Node:                  Light5
Src Port:                  3.0
Dest Admin Node:           Light3
Dest Operational Node:     Light3
Dest Admin Port:           7.3
Dest Operational Port:     7.3

Src Admin Insured Rate:    1536000 bps
Src Oper Insured Rate:     1535864 bps
Src Admin Insured Burst:   3000 bytes
Src Oper Insured Burst:    2983 bytes
Src Admin Max Rate:        1536000 bps
Src Oper Max Rate:         1535864 bps
Src Admin Max Burst:       3000 bytes
Src Oper Max Burst:        2983 bytes

Dest Oper Insured Rate:    1535864 bps
Dest Oper Insured Burst:   2983 bytes
Dest Oper Max Rate:        1535864 bps
Dest Oper Max Burst:       0 bytes

To-Net Circuit ID:         6
To-Net Circuit State:      Active
From-Net Circuit ID:       4
From-Net Circuit State:    Active
Last ATMM Error:           OK
Cells Required:            4504

CLP=0 Frames to Switch:    2855597
CLP=0 Cells to Switch:     5706365
CLP=1 Frames to Switch:    2293693
CLP=1 Cells to Switch:     4587386
Discarded Frames:          0
Discarded Cells:           0
CLP=0 Frames from Switch:  1344755
CLP=0 Cells from Switch:   4033323
CLP=1 Frames from Switch:  448244
CLP=1 Cells from Switch:   1344623

cli>

```

Monitoring Modems

Note If you have a redundant switch card, you can monitor the modem port on either the active or backup switch card. This command is not used for monitoring modems connected to line card ports and is not available on the SUN4 version of the CLI.

To monitor the modem port on the switch card's console/modem assembly, follow these steps:

Step 1 Verify that the target switch is correct by entering the following at the `cli>` prompt:

```
cli> show snmp
```

If you need instructions on changing the target switch, see "Setting the Target Switch for CLI Commands" in the chapter entitled "Command Line Interface."

Step 2 Enter the following at the `cli>` prompt:

```
cli> show modem <slot #> <parameter>
```

Where

<slot #> is sa or sb for the switch cards

<parameter> is all
initstring

The following is an example of the display you see when you enter **show modem sa all**:

```
cli> show modem sa all
Initstring: AT&S&D2&&C1S0=1S7=3OS36=7S95=44
cli>
```

Monitoring Switch Cards, NPs, and Power Supplies

These steps tell you how to monitor the status of your redundant components (switch cards, NPs, and power supplies):

Step 1 Verify that the target switch is correct by entering the following at the `cli>` prompt:

```
cli> show snmp
```

If you need instructions on changing the target switch, see "Setting the Target Switch for CLI Commands" in the chapter entitled "Command Line Interface."

Step 2 To look at the status of switch cards, enter the following at the `cli>` prompt:

```
cli> show chassis primaryswitch
```

This command indicates which switch card is the active switch card. If you have a second switch card, you can assume it is the backup switch card.

Step 3 To look at the slot associated with each of the NPs, enter the following at the `cli>` prompt:

```
cli> show chassis general
```

This command displays a number of details including the slot for the active NP, the slot of this NP, and the system up time. The system up time indicates how long this NP has been up.

Step 4 To look at the status of power supplies, enter the following at the `cli>` prompt:

```
cli> show chassis powersupply
```

This command displays the status and type of the two power supplies, A and B.

The following example shows the output for the three commands previously described.

```
cli> show chassis primaryswitch
Switch:                               Switch A

cli> show chassis general
Name:                                 1stb8
Description:                          Cisco LightStream 2020 ATM Switch
Contact:                              Jones
Location:                             Venus
System Up Time                        121 Hr 14 Min 3 Sec

Software Version:                     2.1.1
Console Trap Level:                   Info
Chassis ID:                           5142
Slot of Primary NP:                   1
Slot of This NP:                      1

Primary Addr:                         198.113.179.18
Secondary Addr:                       198.113.179.28
Subnet Mask:                          255.255.255.0
Ethernet Address:                     198.113.178.18
Ethernet IP Mask:                     255.255.255.0
Default Router:                       198.113.178.1

cli> show chassis powersupply
Power Supply A:                       Empty
Power Supply A Type:                   Empty
Power Supply B:                       Good
Power Supply B Type:                   1200W AC Power Supply

cli>
```

Using the CLI to Monitor Configuration and Status

This section provides steps for monitoring the configuration and status of the following connections and processes of an LS2020 switch:

- Connections (ATM UNI, Frame Relay, frame forwarding, Ethernet, FDDI, OC3, and CBR)
- Processes (CLI, collector, GID, and ND)

Monitoring ATM Connections

To monitor the ATM UNI virtual channel identifiers (VCIs) configured on a particular ATM UNI port, follow these steps. They provide you with information on the individual connections configured on each port. This information is available for ATM UNI ports only.

Step 1 Verify that the target switch is correct by entering the following at the `cli>` prompt:

```
cli> show snmp
```

If you need instructions on changing the target switch, see “Setting the Target Switch for CLI Commands” in the chapter entitled “Command Line Interface.” To get a list of all VCIs configured on a particular ATM UNI port, enter the following at the `cli>` prompt:

```
cli> show port <port#> listvci
```

Where

`<port#>` is the number of the port for which information displays. The port number is in card.port format (card is 2 to 10; port is 0 to 7).

Step 2 Once you have a list of all ATM-UNI VCIs, you can look at a particular VCI by entering the following at the `cli>` prompt:

```
cli> show port <port#> vci <vci#>
```

Where

`<vci#>` is the number of the VCI for which information displays.

Figure 4-22 is an example of the display you see when you enter **show port 6.0 vci 16**.

Figure 4-22 Example of ATM UNI Display

```
cli> show port 6.0 vci 16

Source Node:                Light8
Source Port:                6.0
Source VCI:                 16
Src Admin Insured Rate:     9434 cells/sec
Src Oper Insured Rate:      9434 cells/sec
Src Admin Insured Burst:    1000 cells
Src Oper Insured Burst:     1000 cells
Src Admin Max Rate:         9434 cells/sec
Src Oper Max Rate:          9434 cells/sec
Src Admin Max Burst:        1000 cells
Src Oper Max Burst:         1000 cells

Dest Oper Node:             Light6
Dest Oper Port:             9.0
Dest Oper VCI:              16
Dest Oper Insured Rate:     9434 cells/sec
Dest Oper Insured Burst:    1000 cells
Dest Oper Max Rate:         9434 cells/sec
Dest Oper Max Burst:        1000 cells
Oper Bandwidth Type:        guaranteed
Admin Bandwidth Type        guaranteed
Oper Transfer Priority       1
Admin Transfer Priority      1
To-Net Circuit ID:          16
To-Net Circuit State:       Active
From-Net Circuit ID         16
From-Net Circuit State:     Active
Last ATMM Error:            OK

Cells Required:              9434
CLP=0 Cells to Switch:      0
CLP=0/1 Cells to Swtich:    0
CLP=1 Cells to Switch:      0
Discarded Cells:            0

cli>
```

You can also get a list of all the ATM UNI VCIs for the entire chassis by entering the **show chassis listvci** command.

Monitoring Frame Relay Connections

These steps allow you to monitor individual data link connections configured on Frame Relay ports. These connections are recognized by their data link connection identifiers (DLCIs).

Step 1 Verify that the target switch is correct by entering the following at the `cli>` prompt:

```
cli> show snmp
```

If you need instructions on changing the target switch, see “Setting the Target Switch for CLI Commands” in the chapter entitled “Command Line Interface.” To get a list of all data link connections configured on a particular Frame Relay port, enter the following at the `cli>` prompt:

```
cli> show port <port#> listdlci
```

Where

`<port#>` is the number of the port for which information displays. The port number is in card.port format (card is 2 to 10; port is 0 to 7).

Step 2 Once you have a list of DLCIs, you can look at a particular circuit by entering the following at the `cli>` prompt:

```
cli> show port <port#> dlci <dlci#>
```

Where

`<dlci#>` is the DLCI number for which information displays. The DLCI number must be between 16 and 991.

Note See the *LightStream 2020 CLI Reference Manual* for information on setting and showing port attributes with the CLI.

Figure 4-23 shows an example of the display you see when you enter **show port 10.7 dlci 141**.

Figure 4-23 Example of Frame Relay Display

```
cli> show port 10.7 dlci 141

Src Node:                               Light8
Src Port:                               10.7
Src DLCI:                               141
Src Admin Insured Rate:                 32000 bps
Src Oper Insured Rate:                  31713 bps
Src Admin Insured Burst:                1516 bytes
Src Oper Insured Burst:                 1491 bytes
Src Admin Max Rate:                     64000 bps
Src Oper Max Rate:                      63767 bps
Src Admin Max Burst:                    3032 bytes
Src Oper Max Burst:                     2983 bytes

Dest Admin Node:                        Light6
Dest Admin Port:                        3.4
Dest Admin DLCI:                        141

Dest Oper Node:                         Light6
Dest Oper Port:                         3.4
Dest Oper DLCI:                         141

Dest Oper Insured Rate:                 31713 bps
Dest Oper Insured Burst:                1491 bytes
Dest Oper Max Rate:                     63767 bps
Dest Oper Max Burst:                     2983 bytes

Local LMI State:                        Inactive
Remote LMI State:                       Active
To-Net Circuit ID:                      36
To-Net Circuit State:                   Active
From-Net Circuit ID:                    31
From-Net Circuit State:                 Active
Last ATMM Error:                        OK
Last ATM Error Location:
Cells Required:                          116

cli>
```

You can also get a list of all the Frame Relay connections for the entire chassis by entering the **show chassis listdlci** command.

43224

Monitoring CLI Attribute Settings

These steps let you monitor the attribute settings for the CLI program itself:

Step 1 Enter the following at the `cli>` prompt:

```
cli> show cli <parameter>
```

Where

<parameter> is all (default)

```
echosource
lineedit
log
term
timer
timestamp
timeout
traplevel
debug
banner
```

The following is an example of the display you see when you enter **show cli**:

```
cli> show cli
```

```
Echo source:      on
Line Edit:       on
Logging:         off
Terminal Type:   vt100
Date/Time:       Thu Jun 15 16:02:40 1995
SNMP Timeout value= 6 seconds
Timestamp:       off
Timer:           4 Hour(s) 37 Minute(s) 38 seconds
Traplevel:      Debug
Debug:           off
Banner:          CLI (Version 2.100 of May 24 1995
PROGRAM: cli:    compiled May 24 1995 @ 02:31:40
```

Monitoring the Collector

The collector lets you run up to 25 collections at one time. You can set up the collections to save user-defined data for a specified time interval and you can use this data for future analysis. For further information on creating collections, see the “LightStream 2020 Statistics and Data Collection” chapter.

To monitor the status of a particular collection, follow these steps:

Step 1 Verify that the target switch is correct by entering the following at the `cli>` prompt:

```
cli> show snmp
```

If you need instructions on changing the target switch, see “Setting the Target Switch for CLI Commands” in the chapter entitled “Command Line Interface.” To look at the status of a particular collection, enter the following at the `cli>` prompt:

```
cli> show collection [<collection #>]
```

Where

[<collection #>] is the number of any collection that has been defined. If you do not enter a collection number, CLI displays all collections that have been defined.

The following is an example of the display you see when you enter **show collection 1**:

```
*cli> show collection 1
*** Collection 1 ***
Collection Status:      Under Creation
Operational Status:    Under Creation
Begin Time:            06/22/1995 08:02:43 EDT (06/22/1995 12:02:43 GMT)
End Time:              01/18/2038 22:14:07 EST (01/19/2038 03:14:07 GMT)
Interval:              60 sec
File:                  /usr/tmp/collector/collect.1

Collection Items:
Name: CollectDBObjectID.1.1  Value: ifInOctets.3000
Name: CollectDBObjectID.1.2  Value: ifInOctets.3001
Name: CollectDBObjectID.1.3  Value: ifInOctets.3002
Name: CollectDBObjectID.1.4  Value: ifInOctets.3003
```

Monitoring GID

The global information distribution (GID) system is a service that maintains a consistent network-wide database. It ensures that every switch has an up-to-date copy of all the information in the database.

To monitor the status of the GID software, follow these steps:

Step 1 Verify that the target switch is correct by entering the following at the `cli>` prompt:

```
cli> show snmp
```

If you need instructions on changing the target switch, see the section on “Setting the Target Switch for CLI Commands” in the chapter entitled “Command Line Interface.”

Step 2 Enter the following at the `cli>` prompt:

```
cli> show gid <parameter>
```

Where

<parameter> is all (default)

- general
- synchronization
- cards
- clients
- neighbors
- ports
- ip

The following is an example of the display you see when you enter **show gid all**:

```
cli> show gid all
Software Version Number:  gidd: (ls2_1_1) compiled Oct 16 1995 @ 01:52:23
GID Process ID (PID):    76
Memory In Use:           0 Bytes
Memory Allocation Failures: 0

Neighbors in Existent Sync State: 0
Neighbors in Exchange Start State: 0
```

```

Neighbors in Exchange State:      0
Neighbors in Loading Sync State:  0
Neighbors in Full Sync State:     3

```

Cards Managed by Gid:

```

-----
Chassis  Slot      Seq#    Age  Originating-NP  Ports
-----
lstb8    1    139863522    543      lstb8.1         0
lstb8    2    141243346   1327      lstb8.2         0
lstb8    3    139863833   1439      lstb8.1         8
.
.
.

```

Clients Managed by Gid:

```

-----
Client PID    LSA-Rx    IPA-Rx    Gen-Rx  Events-Tx  Paths-Generated
-----
69           0         0         0        0          0
70           0         0         0        0          0
77          1316353    243      163      519       6257
.
.
.

```

Neighbors Managed by Gid:

```

-----
Chassis  VCI    State    SYNC RLL  SLL Hello  LSA  NLSA  IPA  NIPA  GA  NGA
-----
lstb8.2  62722  full      8   0    0    2   196   196  131  131   5   4
lstb7.1  79105  full      7   0    0    2  6212  5876  381  366  62  62
.
.
.

```

Ports Managed by Gid:

```

-----
Chassis  Port Service Up/Down    BW0    BW1    BW2  Remote-Port
-----
lstb8    3.0   edge    Up        188    188     0      none.none
lstb8    3.1   edge    Down       0      0      0      none.none
lstb8    3.2   edge    Up       2628   1298     0      none.none
.
.
.

```

IP Addresses Managed by GID:

```

-----
IP Address    Age    Seq#    Advertising-NP    Net-Mask    Port
-----
198.113.178.13 2430  146596901  lstb3.1    255.255.255.0  lstb3.0.11
198.113.178.14 2059  146605717  lstb4.1    255.255.255.0  lstb4.0.11
198.113.178.15 2154  146603365  lstb5.1    255.255.255.0  lstb5.0.11
.
.
.
cli>

```

If you enter any parameter except **all**, a subset of the attributes is displayed.

Monitoring ND

The neighborhood discovery (ND) process runs on every NP in an LS2020 network. It collects information about the local topology of the network, keeps track of the interface modules that are added to or removed from service, and determines which NP controls each interface module.

To monitor the status of the ND software, follow these steps:

Step 1 Verify that the target switch is correct by entering the following at the `cli>` prompt:

```
cli> show snmp
```

If you need instructions on changing the target switch, see the section on “Setting the Target Switch for CLI Commands” in the chapter entitled “Command Line Interface.”

Step 2 Enter the following at the `cli>` prompt:

```
cli> show nd <parameter>
```

Where

<parameter> is all (default)

- general
- ndcards
- neighbors
- switchupdown
- switchstat

The following is an example of the display you see when you enter **show nd all**:

```
cli> show nd all
Software Version Number:      ndd: (ls2_1_1) compiled Oct 16 1995 @ 02
ND Process ID (PID):          49
Memory In Use:                347686 Bytes
Timers Processed:             1456263
Number of Line Cards managed by ND: 7
Neighbor NPs known to ND:     4
Registered ND Client Processes: 16

Cards Managed by ND:
EIA: lstb8.3      Channel: 26115   State: Up
EIA: lstb8.4      Channel: 9988    State: Up
EIA: lstb8.5      Channel: 5637    State: Up
.
.
.

ND Neighbor Information
EIA: lstb8.1      Channel: 34049   State: Up
EIA: lstb8.2      Channel: 62722   State: Up
.
.
.

ND Up/Down Parameters:
Slot: 1 Oper Intvl: 900   J: 2     K: 31     M: 2     N: 32
      Admn Intvl: 900   J: 2     K: 31     M: 2     N: 32
Slot: 2 Oper Intvl: 900   J: 2     K: 31     M: 2     N: 32
      Admn Intvl: 900   J: 2     K: 31     M: 2     N: 32
Slot: 3 Oper Intvl: 900   J: 2     K: 31     M: 2     N: 32
      Admn Intvl: 900   J: 2     K: 31     M: 2     N: 32
.
.
.
```

```

ND Switch Statistics:
Slot: 1 In Cells: 485589 Errs: 0 Out Cells: 485589 Errs: 0
Slot: 2 In Cells: 486066 Errs: 0 Out Cells: 485688 Errs: 0
Slot: 3 In Cells: 484356 Errs: 0 Out Cells: 485689 Errs: 0
.
.
.

ND Clients:
PID: 56 Type: sys Subtype: 5 EIA: 0.0 Mask: 0x0
PID: 68 Type: Unknown Subtype: 11 EIA: 0.0 Mask: 0x200
PID: 69 Type: Unknown Subtype: 9 EIA: 0.0 Mask: 0x230
.
.
.
cli>

```

If you enter any parameter except **all**, a subset of the attributes shown above is displayed.

Monitoring Processes

These steps let you monitor the status of a particular process. You select the process you want to monitor by entering its number or name.

Step 1 Verify that the target switch is correct by entering the following at the `cli>` prompt:

```
cli> show snmp
```

If you need instructions on changing the target switch, see the section on “Setting the Target Switch for CLI Commands” in the chapter entitled “Command Line Interface.”

Step 2 If you do not know which processes are running, enter the following at the `cli>` prompt:

```
cli> walksnmp pidName
```

This command lists the process identification (pid) numbers and alias names of all processes running on this LS2020 switch. The pid numbers follow the term “Name: lwmaTrapCliAlias,” and the alias names follow the term “Value.”

The following is an example of the display you see when you enter **walksnmp pidName**:

```

cli> walksnmp pidName
Name: pidName.49 Value: ndd
Name: pidName.54 Value: lcmon
Name: pidName.55 Value: trapmon
Name: pidName.56 Value: watchdog
Name: pidName.57 Value: mma
Name: pidName.68 Value: sysinit
.
.
.
cli>

```

Step 3 Choose the processes that you want to monitor from this list.

Step 4 To display the status of a particular process, enter the following at the `cli>` prompt:

```
cli> show pid {<#>|<alias>} [<parameter>]
```

Where

{<#> | <alias>} is the number of the process or the alias name of the process for which you want to display status.

```
[<parameter>] is all (default)
name
clialias
createtime
adminstatus
operstatus
traplevel
```

The following is an example of the display you see when you enter **show pid 9 all**:

```
cli> show pid 71 all
PID Name:                rmon
PID Alias:               RMON
PID Up Time:             121 Hr 43 Min 25 Sec
PID Administrative Status: Active
PID Operation Status:    Active
PID Trap Level:          Info
cli>
```

The same information displays when you enter **show pid lcc9**. (The lcc9 entry is the alias name for process 9.)

If you enter any parameter except **all**, a subset of these attributes displays.

Monitoring SNMP Parameters

SNMP operation is controlled by a number of parameters that are set to default values when the system is started. These parameters can be changed through use of the **set snmp** command. (See the “SNMP Commands” chapter for a discussion of this command.)

To monitor SNMP parameters, enter the **show snmp** command at the `cli>` prompt. The following is an example of the display you see when you enter **show snmp**:

```
cli> show snmp
Community: public
HostName:  localhost
cli>
```

Monitoring the Test and Control System

The test and control system (TCS) is a fully integrated, yet autonomous, computer system with the LS2020 chassis. There is a TCS microcomputer on each NP, interface, and switch module in an LS2020 chassis. The TCS has a separate communications path from the LS2020 switch.

The main functions of the TCS are to manage low-level operations of each module and to provide access to all modules in the chassis through a local console port, which is supported by the TCS microcomputer on the switch card.

Monitoring TCS

To monitor the values collected by the TCS on a particular card in the chassis, follow these steps. The cards you can monitor are in slots 1 to 10, switch A (SA), and switch B (SB).

Step 1 Verify that the target switch is correct by entering the following at the `cli>` prompt:

```
cli> show snmp
```

If you need instructions on changing the target switch, see the section on “Setting the Target Switch for CLI Commands” in the chapter entitled “Command Line Interface.”

Step 2 Enter the following at the `cli>` prompt:

```
cli> show tcs <card #> [<parameter1>] [<parameter2>]
```

Where

<card #> is 1 to 2 for NPs

2 to 10 for line cards

SA and SB for switch cards

Note This command is not available on the SUN4 version of the CLI.

Table 4-12 describes the <parameter1> and <parameter2> arguments of the **show tcs** command.

Table 4-12 Parameter Options—show tcs Command

<parameter1> =	<parameter2> ¹ =
all (default)	N/A
state	N/A
config	all assembly postcode serialnum slavecode type
daughter	all assembly serialnum
paddle	all assembly serialnum
oem	all assembly serialnum
midplane	all assembly serialnum nodeaddress
temperature	N/A
voltage	N/A
power	N/A

1. Parameter2 is dependent on parameter1. When you enter a command, you first select the value of parameter1 from this table. Based on that selection, you can choose a value of parameter2 that is associated with parameter1.

When you enter **show tcs 1 all**, information similar to the following is displayed. If you use any value except **all** for the argument, a subset of this information is displayed.

```
cli> show tcs 1 all
Slot 1 State:
    Power Supply:      OK
    Temperature:      OK
    Clock:             OK
    POST:              OK
    XILINX Load:       OK
    Application Load:  OK
    Paddle Card:       PRESENT
    Paddle Card:       OK
    Paddle Card Override: DISABLED
    Paddle Power Override: DISABLED
    Flash:             ENABLED
    CP POST:           ENABLED
    Application:       ENABLED
    Card:              ENABLED
    TCS VCC Power:     OK
    VCC Power:         OK
```

```
VPP Power:           OK
SCSI Power:          OK
Top Temperature:     OK
Bottom Temperature:  OK
Board Initialization: OK
Flash Initialization: OK
TCS hub:             OK
Slot 1 Config Assembly: 2121701G01
Slot 1 Config Postcode: 00
Slot 1 Config Serialnum: AA841905
Slot 1 Config Slavecode: C1
Slot 1 Config Type:    N1
Slot 1 Daughter Assembly: 2121861G02
Slot 1 Daughter Serialnum: AA841914
Slot 1 Paddle Assembly: 2121992G01
Slot 1 Paddle Serialnum: 315-03
Slot 1 Oem Assembly:
Slot 1 Oem Serialnum:
Slot 1 State:
  Top:      89 F (warning 165 F, shutdown 174 F)
           31 C (warning 73 C, shutdown 78 C)
  Bottom:   93 F (warning 131 F, shutdown 174 F)
           33 C (warning 55 C, shutdown 78 C)
Slot 1 Voltage:
  TCS VCC Voltage:      5.004 (Normal Range: 4.614 / 5.371)
  VCC Voltage:          5.004 (Normal Range: 4.370 / 5.615)
  SCSI Voltage:         4.785 (Normal Range: 4.614 / 5.371)
  VPP Voltage*:         0.000 (Normal Range: 11.067 / 12.858)
                      *VPP Voltage Is Valid Only During FLASH Initialization

Slot 1 power: On
cli>
```

