

# Preparing for Installation

---

This chapter includes specific information about required tools and parts, safety guidelines, and specific preparatory information required to assure a successful installation.

Do not unpack the Cisco 7010 until you are ready to install it. Keep the chassis in the shipping container to prevent accidental damage until you have determined where you want it installed, then proceed with unpacking.

The *Cisco Information Packet* is included in the shipping container, together with any companion publications you specified on your order. Inspect all items for shipping damage. If anything appears to be damaged, immediately contact a customer service representative. When you finish unpacking the router, refer to the following sections.

## Tools and Parts You Need

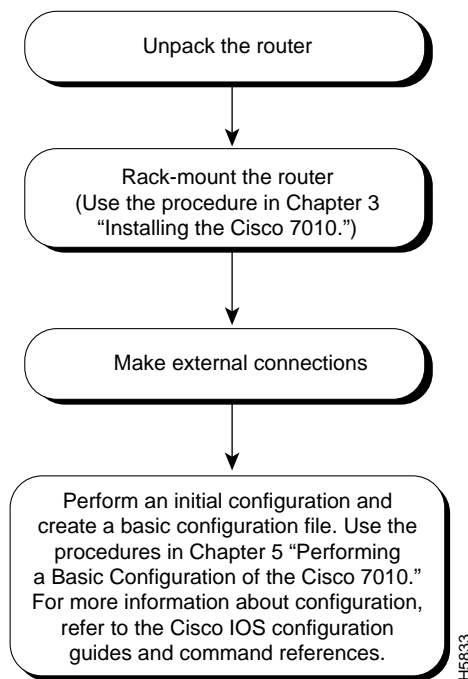
Following are the tools and parts generally required to install your Cisco 7010:

- Number 1 Phillips and 3/16-inch (0.476 cm) flat-blade screwdrivers
- Rack-mount brackets (included)
- One interface cable for each physical interface required
- A channel service unit/digital service unit (CSU/DSU) for each data terminal equipment (DTE) serial interface
- Ethernet and Fast Ethernet transceivers (if required for the EIP and FEIP interfaces)
- Modem for remote configuration (if required)
- Additional tools, parts, and procedures listed and discussed in companion documentation, and which are not discussed in this publication

## How to Install the Cisco 7010

Figure 2-1 shows a flowchart that illustrates the recommended order of procedures to install the Cisco 7010 router and attach external cables to it. It also indicates which Cisco publications you should refer to for detailed information.

**Figure 2-1      Installation Flowchart**



## Safety Recommendations

Because any device that uses electricity can cause injury, follow these guidelines to ensure general safety:

- Keep the chassis area clear and dust-free during and after installation.
- Keep tools away from walk areas where you and others could trip over them.
- Wear safety glasses when exposed to conditions that might be hazardous to your eyes.



**Warning** Invisible laser radiation may be emitted from the aperture ports of the single-mode FDDI card when no cable is connected. *Avoid exposure and do not stare into open apertures.* (For translated versions of this warning, refer to the appendix “Translated Safety Warnings.”)

- Do not perform any action that creates a potential hazard to people or makes the equipment unsafe.
- Locate the emergency power-off switch for the room in which you are working. Then, if an electrical accident occurs, you can act quickly to shut off power.



**Warning** See the installation instructions before you connect the system to its power source. (For translated versions of this warning, refer to the appendix “Translated Safety Warnings.”)



**Warning** Do not touch the power supply when the power cord is connected. For systems with a power switch, line voltages are present within the power supply even when the power switch is off and the power cord is connected. For systems without a power switch, line voltages are present within the power supply when the power cord is connected. (For translated versions of this warning, refer to the appendix “Translated Safety Warnings.”)

- If ESD grounding is required, ground the chassis.
- Do not work alone when potentially hazardous conditions exist.

## Safety Recommendations

---

- Never assume that power is disconnected from a circuit. Always check.



**Warning** Before working on a chassis or working near power supplies, unplug the power cord on AC units or disconnect the power at the circuit breaker on DC units. (For translated versions of this warning, refer to the appendix “Translated Safety Warnings.”)

- Look carefully for possible hazards in your work area, such as moist floors, ungrounded power extension cables, and missing safety grounds.
- Before working on equipment that is connected to power lines, remove jewelry (including rings, necklaces, and watches). Metal objects will heat up when connected to power and ground and can cause serious burns or weld the metal object to the terminals.
- If an electrical accident occurs, proceed as follows:
  - Use caution; do not become a victim yourself. Disconnect power to the system.
  - If possible, send another person to get medical aid. Otherwise, assess the condition of the victim and then call for help.
  - Determine if the person needs rescue breathing or external cardiac compressions; then take appropriate action.

## Preventing Electrostatic Discharge Damage

Electrostatic discharge (ESD) can damage equipment and impair electrical circuitry. It occurs when electronic components are improperly handled and can result in intermittent or complete failures. Always follow ESD-prevention procedures when removing and replacing components. Ensure that the chassis is electrically connected to earth ground. Wear an ESD-preventive wrist strap, ensuring that it makes good skin contact. To safely channel unwanted ESD voltages to ground, connect the clip to an unpainted surface of the chassis frame. If no wrist strap is available, ground yourself to the metal chassis.



**Caution** For safety, periodically check the resistance value of the ESD-preventive wrist strap, which should be between 1 and 10 megohms.

## Removing and Installing Processor Modules

Depending on your configuration, you might need to insert additional or new processor modules in your Cisco 7010. (See Figure 1-1 in the chapter “Product Overview.”) To insert or remove interface processors, you do not need to turn off power to the system; all interface processors support online insertion and removal (OIR). Interface processors include AIP, CIP, EIP, FEIP, FIP, FSIP, HIP, MIP, and TRIP. However, you *must* turn off the system power before you insert or remove the RP, SP, SSP, RSP7000, or RSP7000CI processor modules.

You need a number 1 Phillips or 3/16-inch, flat-blade screwdriver to remove any fillers (blank processor carriers) and to tighten the captive installation screws that secure the processor module in its slot. Whenever you handle modules, you should use an ESD-preventive wrist strap or other grounding device to prevent ESD damage.

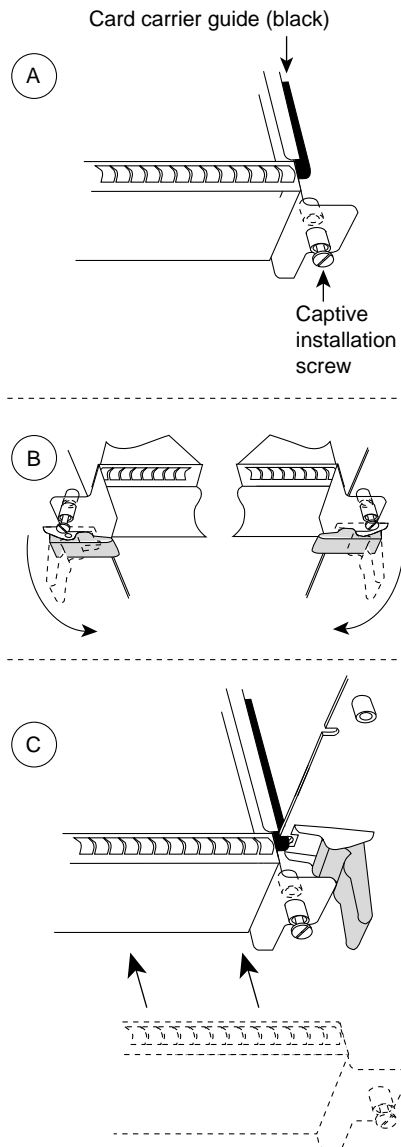
You can install interface processors (as shown in Figure 2-2) in any of the three interface processor slots, numbered 0 through 2 from bottom to top when viewing the chassis from the rear. (Refer to Figure 1-1.) The two top slots contain the SP (or SSP) and RP, which are required system components.



**Caution** To prevent the overheating of internal components, always install fillers in empty slots to maintain the proper flow of cooling air across the processor modules. To prevent ESD damage, handle processor modules by the handles and carrier edges only.

## Removing and Installing Processor Modules

**Figure 2-2 Removing and Replacing Processor Modules**



Remove a module as follows:

1. Use a screwdriver to loosen the captive installation screws (shown in A).
2. Simultaneously pull the ejector levers out to release the module from the backplane connector (shown in B). The levers should snap into their spring retainers.
3. Grasp the module handle with one hand and place your other hand under the carrier to support and guide the module as you pull it out of the slot. Avoid touching the card.
4. Place the removed module on an antistatic mat or antistatic foam, or immediately install it in another slot.
5. Install a new module or a filler (MAS7K-BLANK) to keep dust out of the chassis and to maintain proper airflow through the chassis.

Install a module as follows:

1. Choose a slot for the new module and ensure that there is enough clearance to accommodate any interface equipment that you will connect directly to its ports.
2. Use a screwdriver to loosen the captive installation screws (shown in A) and remove the filler (or the existing module) from the slot to be filled.
3. Hold the module handle with one hand, and place your other hand under the carrier to support the module and guide it into the slot. Avoid touching the card.
4. Place the back of the module in the slot and align the guide on the carrier with the groove in the slot (shown in A).
5. Carefully slide the module into the slot until the faceplate makes contact with the ejector levers (shown in C).
6. Use the thumb and forefinger of each hand to push the ejector lever flat against the module (shown in B).
7. Use a screwdriver to tighten the captive installation screws.

H2620