

Cisco 200 Series

This chapter provides information on the Cisco 200 series product line. The information is organized into the following sections:

- Product Overview
- Standard Features
- Hardware and Software Requirements
- Product Numbers

The Cisco 200 series was formerly known as the LAN²LAN Personal Office for ISDN.

Note Documentation for the Cisco 200 series is available in two forms: on a CD-ROM called Cisco Connection Documentation, Enterprise Series and printed books. A CD and hard-copy installation documentation ship with each chassis, and a configuration note ships with each component ordered. All configuration notes are available on the CD. Additional CDs and a subscription CD update service are also available.

You can also access Cisco technical documentation on the World Wide Web URL <http://www.cisco.com>. For more information, see the chapter “Documentation” at the end of the catalog.

Product Overview

The Cisco 200 series products are remote node products that combine an Open Data-Link Interface (ODI) workstation driver (IPX and TCP/IP) with an ISDN adapter. The Cisco 200 series includes the Cisco 201 and Cisco 202 products. The products provide remote access to enterprise networks and the Internet over ISDN lines. The Cisco 200 series is ideal for telecommuters working from home or small single-user offices. The products provide transparent access to LAN resources, such as databases, hosts, printers, e-mail, and technical support. Using a high-speed ISDN connection, the Cisco 200 series products can also be used to connect a single desktop PC to the Internet. You can connect Cisco 200 series products to all Cisco ISDN routers. The Cisco 200 series products offer an integrated remote node solution at an affordable price.

The Cisco 201 includes software, an integrated ISDN terminal adapter, and an S/T interface, which requires an external NT1 device that is supplied by the ISDN service provider. The Cisco 201 is ideal for international users who prefer to use this external NT1 device. The Cisco 201 can also be used in North America with other external ISDN devices, such as an ISDN fax machine or video device, which shares an ISDN line with the Cisco 201.

The Cisco 202 includes software, an integrated ISDN TA, and a U interface, which does not require an external NT1 device. In North America, the NT1 device is not supplied by the ISDN service provider. The integrated NT1 device eliminates the need to purchase separate equipment for the ISDN connection. At this time, the Cisco 202 is supported in North America only.

The Cisco 201 and Cisco 202 support CiscoRemote for Windows 95. CiscoRemote allows you to browse the World Wide Web, transfer files, log on to remote hosts, access Internet news groups, or share documents in real-time collaborative sessions. See the section “CiscoRemote Software” in the chapter “Access Servers” for more information.



Standard Features

The Cisco 200 series offers the following standard features:

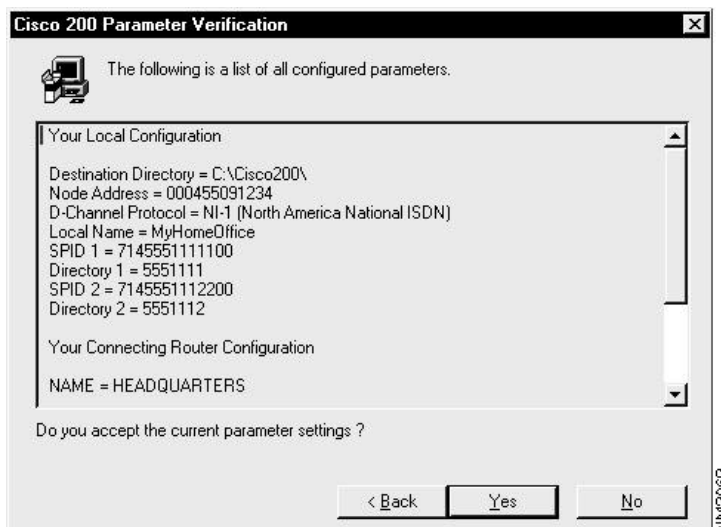
- Hardware and software in a single package
- Integrated ISDN terminal adapter
- One ISDN BRI port with S/T (Cisco 201) or U interface (Cisco 202)
- Optional CiscoRemote Plus software (Windows 95 only)
- Supports major ISDN switch protocols
- Supports IP and IPX
- Easy to install and configure
- High-speed solution—up to 128 kbps
- Increased security with CLI and CHAP
- Point-to-Point Protocol (PPP) support ensures compatibility with other services and vendors
- PPP Callback for sophisticated dial management
- Multilink PPP
- Transparent dial-on-demand routing (DDR)
- Dynamic bandwidth-on-demand

Easy to Install and Configure

The user-friendly installation utility eliminates configuration guesswork. Even nontechnical personnel can install and maintain Cisco 200 series products. The software is available for Windows 95 only.

The following figure shows Cisco's Microsoft Windows 95-based installation program for the Cisco 200 series.

Figure 129 Cisco 200 Series Parameter Verification Windows 95 Dialog Box



Low Cost of Ownership

The Cisco 200 series products represent the lowest-cost entry point for single ISDN users into the Cisco Access product family. The optional integrated NT1 device eliminates the need to purchase separate equipment for an ISDN connection. Because the Cisco 200 series products can be installed in a PC, there is no need to purchase network interface cards or other LAN equipment.

ISDN Security Features

The Cisco 200 series products support calling line identification (caller ID) (where applicable) and CHAP to ensure a secure internetwork. When using caller ID, a router that receives a call from a Cisco 200 series product examines the ISDN number of the calling party and verifies if it is authorized for connection. If the number is not authorized for connection, the call is rejected and no charges are incurred by the calling party. This security feature can be used alone or with CHAP.

The PPP Callback feature supported in the Cisco 200 series provides additional security over normal PPP authentication, because the router can call the Cisco 200 series back at a number preconfigured in the router. If the Cisco 200 series is not at that number, the call is not completed, but the call is logged for further investigation.

PPP

Because Cisco 200 series products use PPP, compatibility with PPP-compliant services, such as the Internet, is guaranteed.

Transparent DDR

Cisco 200 series products support transparent DDR, when connected to a Cisco router. With transparent DDR, you do not need to activate or deactivate the ISDN link; it is handled automatically by the Cisco 200 series product and the connected Cisco router. During periods of inactivity, the ISDN connection is not active, and no charges are incurred. DDR means you pay for ISDN connections only when data is sent. The Cisco 200 series product and the connected Cisco router achieve DDR by performing intelligent spoofing and filtering to ensure that periodic maintenance packets, such as network broadcasts, do not cause the ISDN line to become active.

Bandwidth Optimization

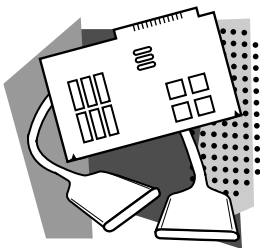
Multilink PPP ensures efficient use of WAN bandwidth. The Cisco 200 series products can use one or two B channels. As traffic increases beyond a defined threshold, the second B channel is added. As traffic decreases beyond a defined threshold, the second B channel is removed.

Hardware and Software Requirements

Table 230 lists the minimum hardware and software requirements for the Cisco 200 series products.

Table 230 Cisco 200 Series Minimum Hardware and Software Requirements

Item	Description
PC CPU type	80386 or higher
PC type	Desktop
Memory	At least 1 MB
PC slot	One available half-length ISA slot
PC operating system	DOS version 5.0 or later
Windows 95	Version 4.0 or later



Product Numbers

The Cisco 200 series includes software, an ISDN adapter, ISDN cable, and documentation. Table 231 lists the Cisco 200 series product numbers.

Table 231 Cisco 200 Series Product Numbers

Description	Product Number
Cisco 201	CISCO-201
Cisco 202	CISCO-202